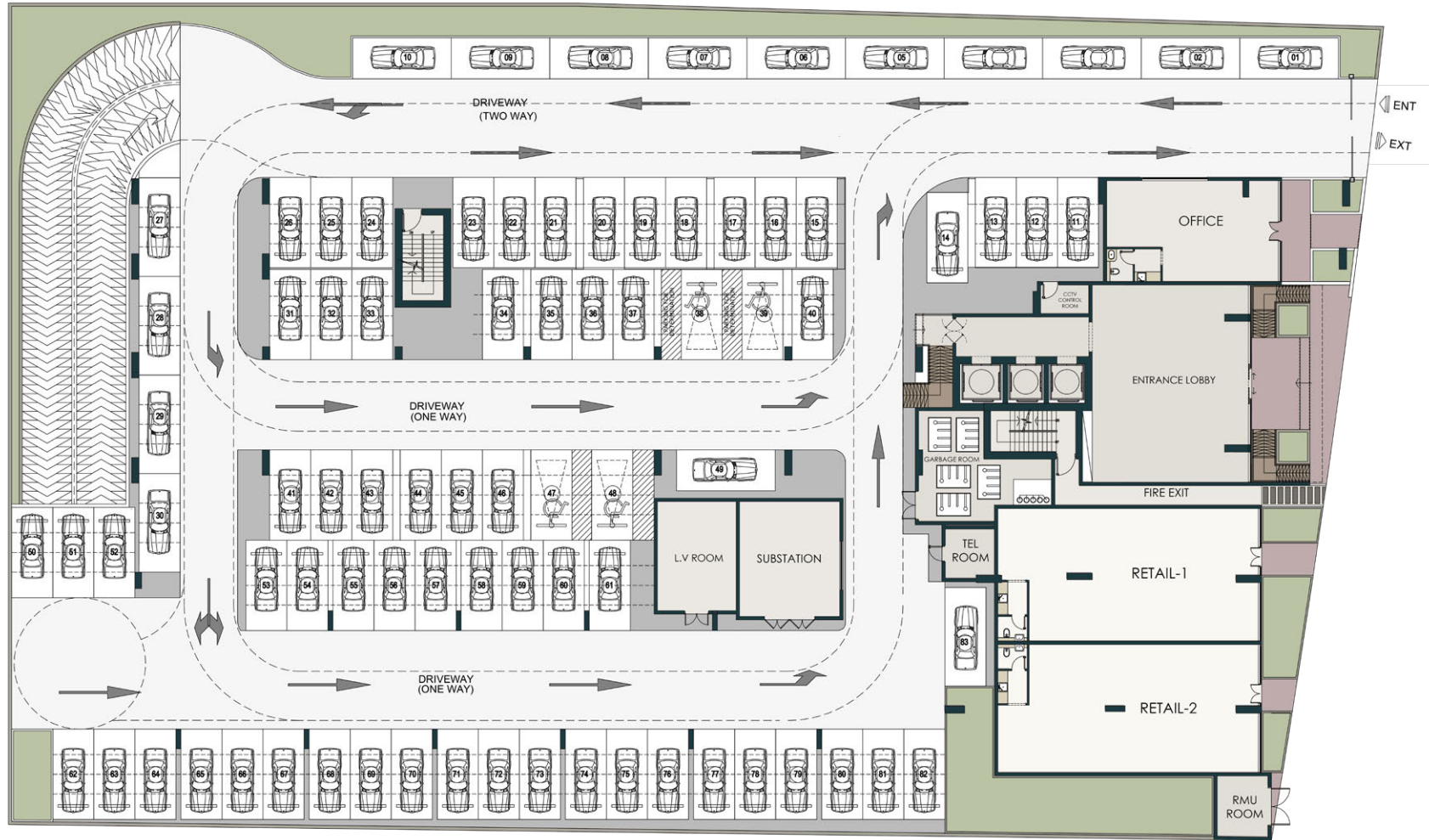
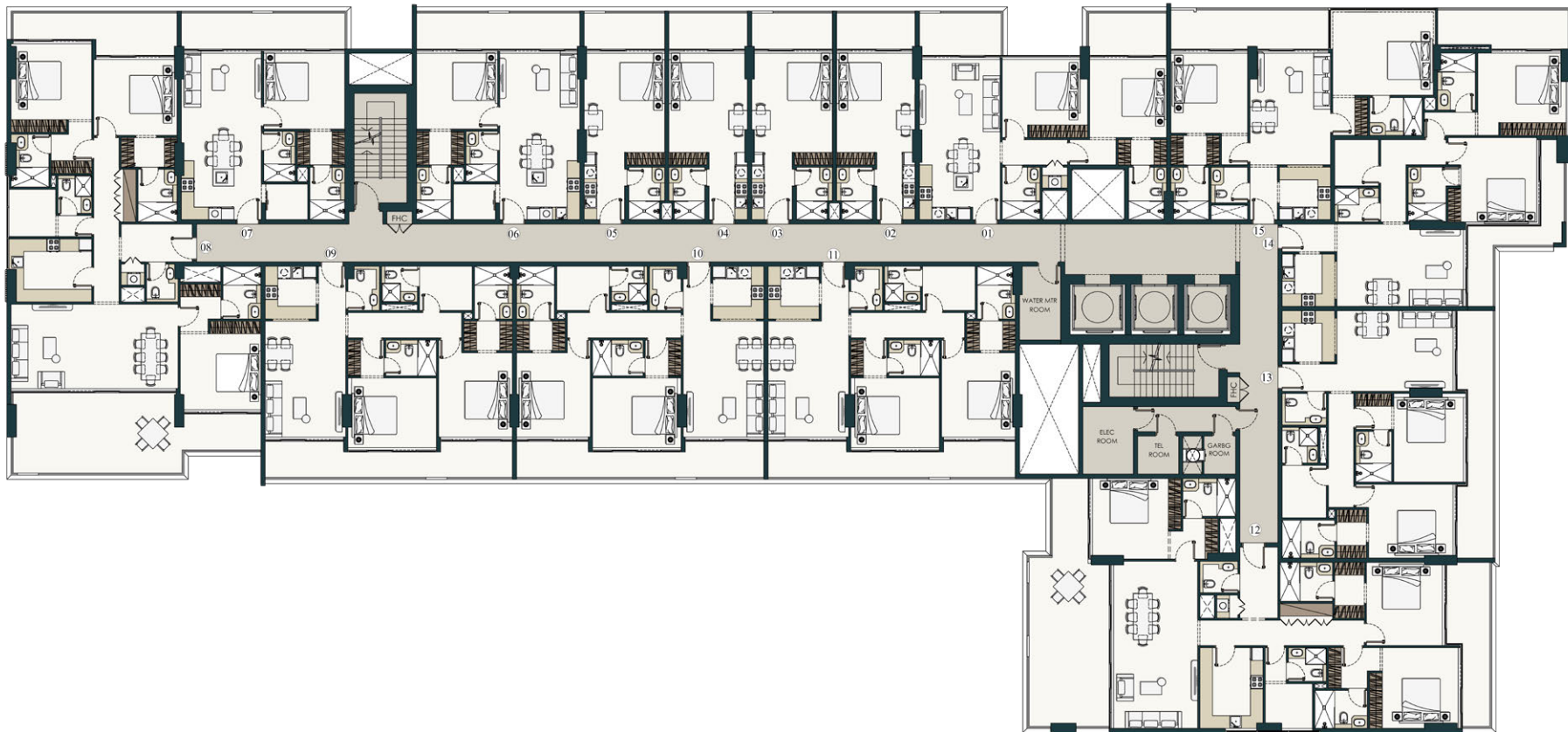


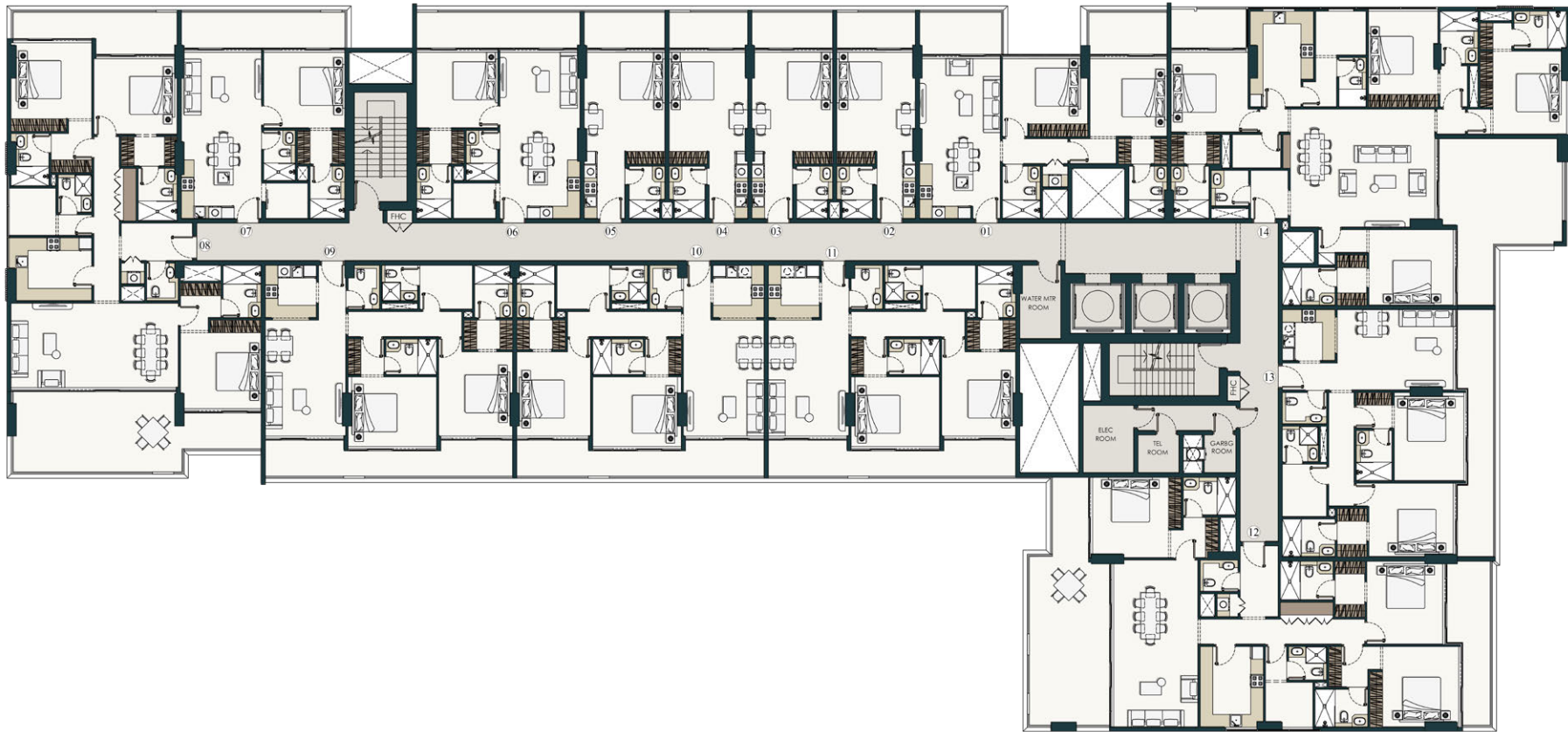


# TYPICAL FLOOR LAYOUT







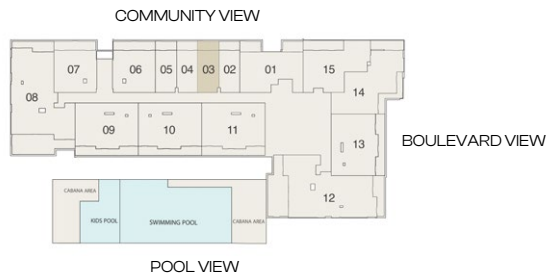


# TYPICAL UNIT PLANS

**STUDIO TYPE A**

Series 03, 05 ( Floors 2 to 8 )

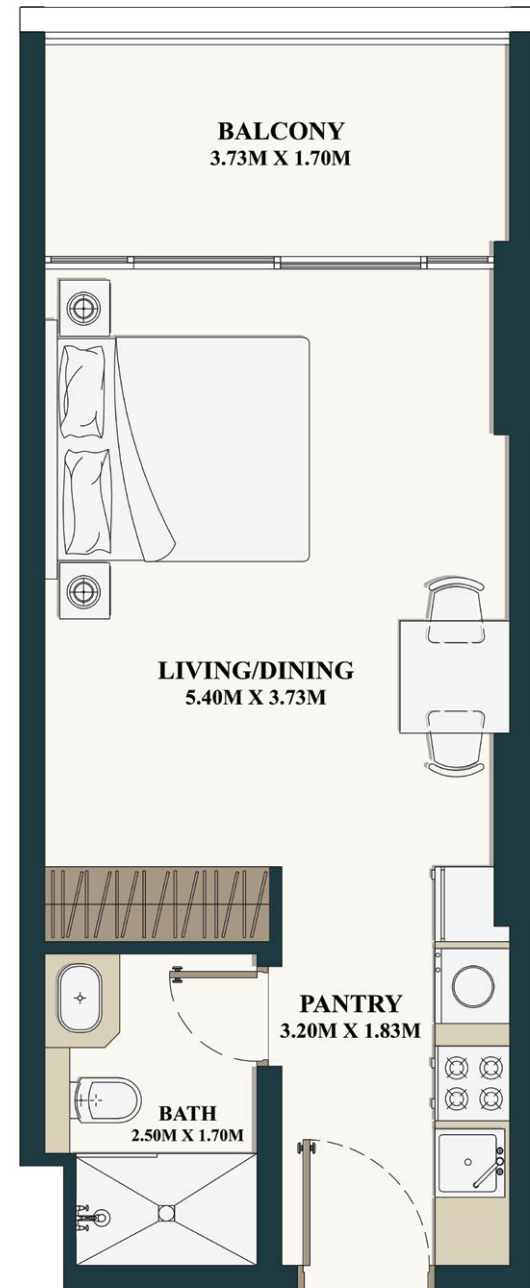
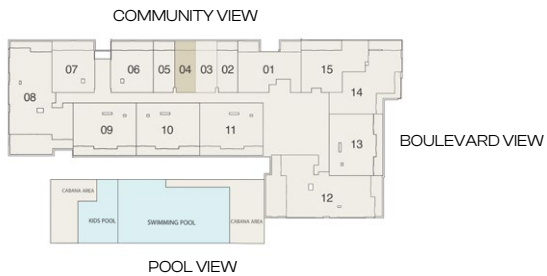
Internal Living Area	350.47 sq. ft.
Balcony Area	76.75 sq. ft.
<b>Total Area</b>	<b>427.22 sq. ft.</b>



**STUDIO TYPE B**

Series 02, 04 ( Floors 2 to 8 )

Internal Living Area	341.65 sq. ft.
Balcony Area	74.59 sq. ft.
<b>Total Area</b>	<b>416.24 sq. ft.</b>



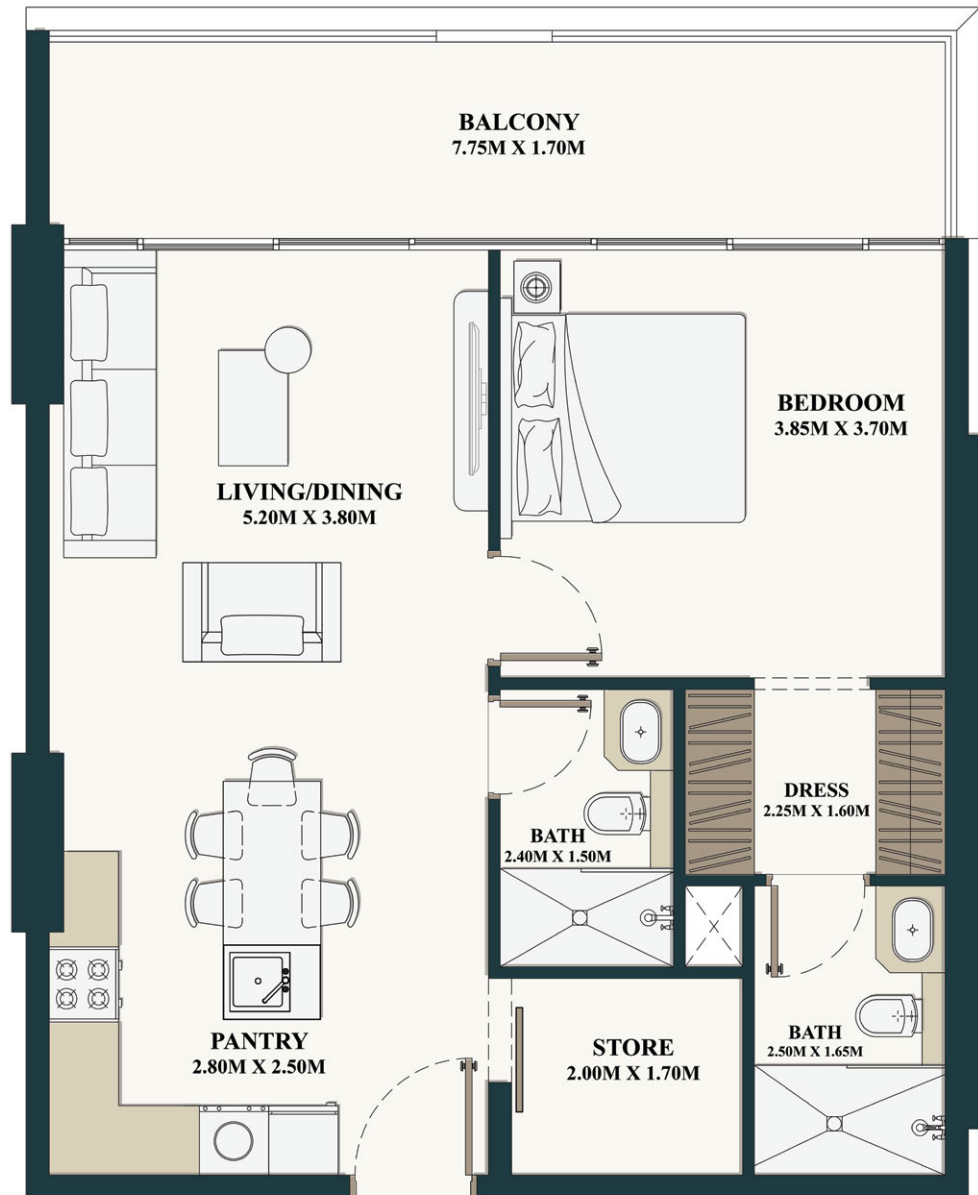
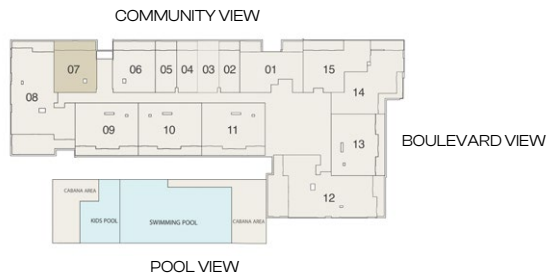
**1 BEDROOM + STUDY**

Series 06, 07 (Floors 2 to 8)

Internal Living Area 700.62 sq. ft.

Balcony Area 149.94 sq. ft.

Total Area 850.56 sq. ft.





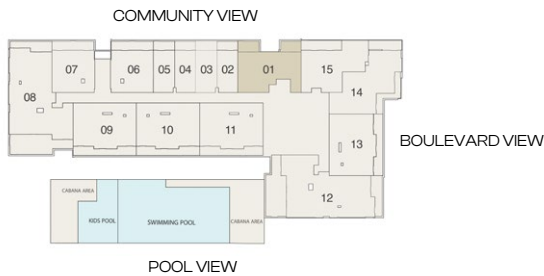
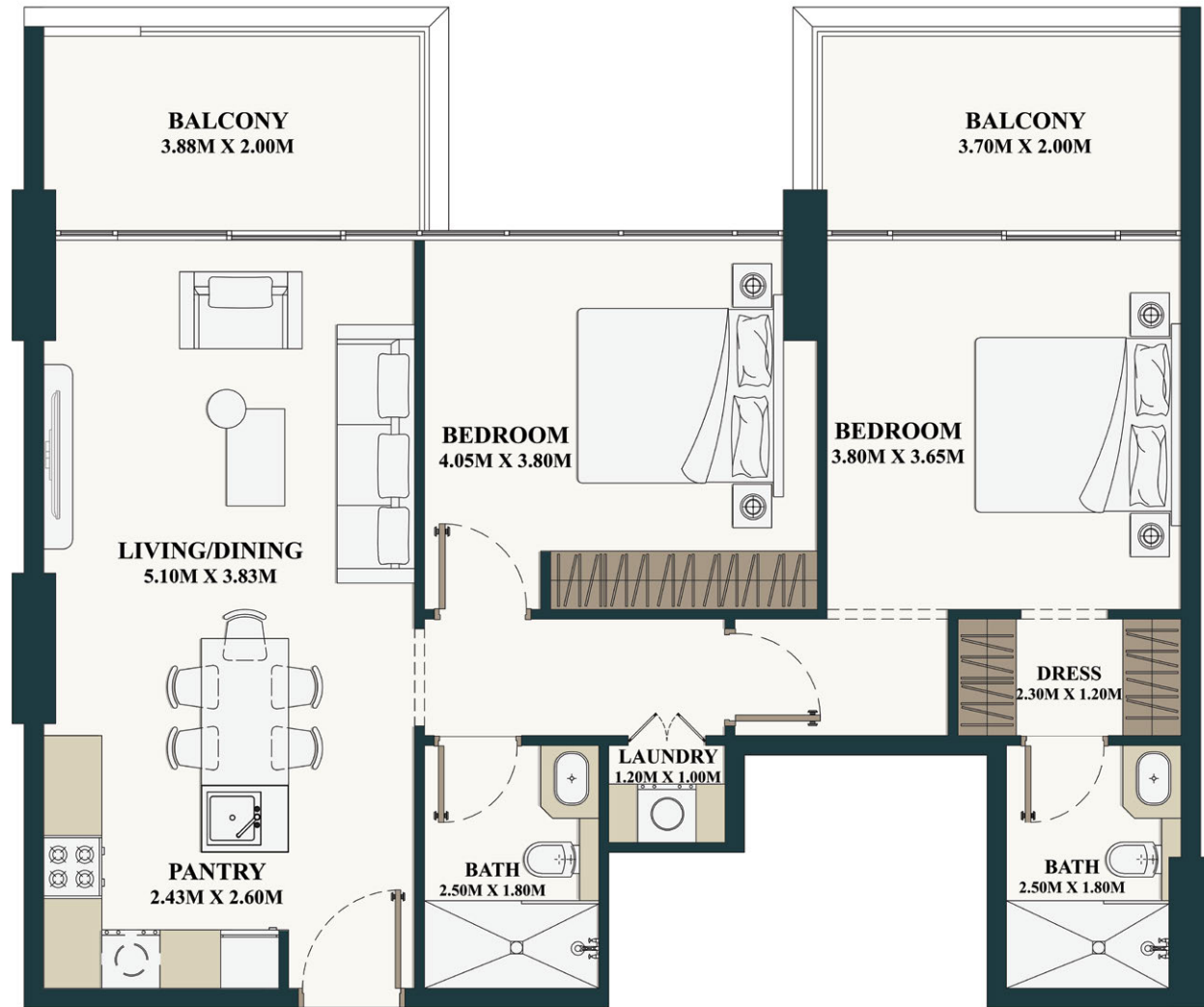
## 2 BEDROOM

Series 01 (Floors 2 to 8)  
Series 15 (Floors 2, 4, 6, 8)

Internal Living Area 911.49 sq. ft.

Balcony Area 174.91 sq. ft.

Total Area 1086.40 sq. ft.



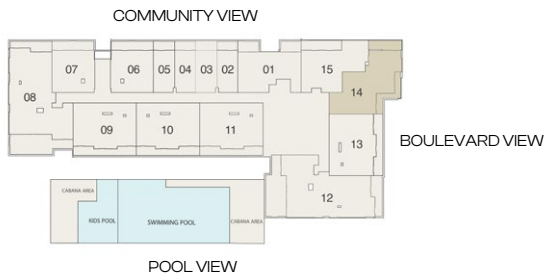
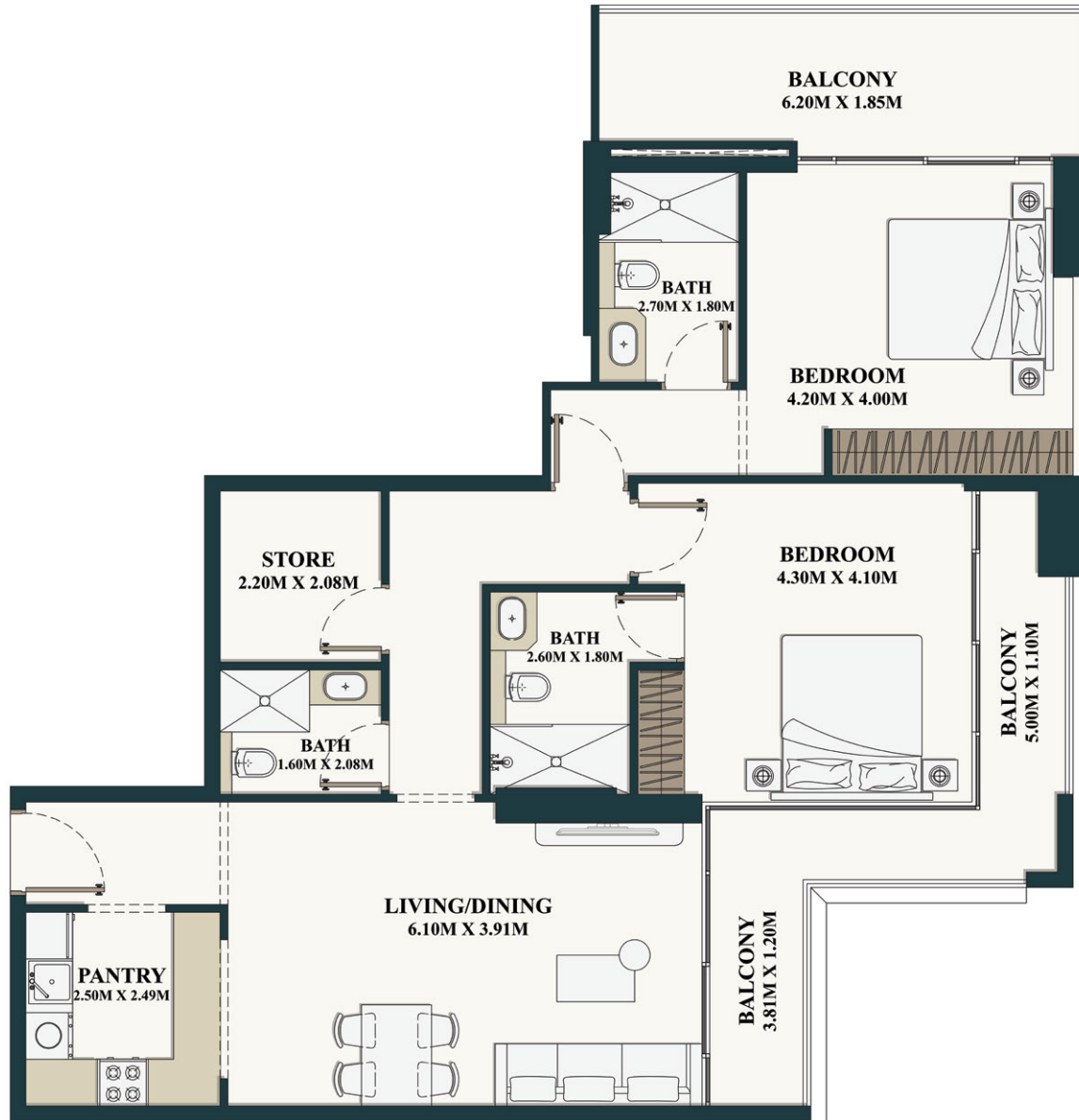
**2 BEDROOM + STUDY**

Series 14 (Floors 2, 4, 6, 8)

Internal Living Area 1108.36 sq. ft.

Balcony Area 263.39 sq. ft.

Total Area 1371.75 sq. ft.



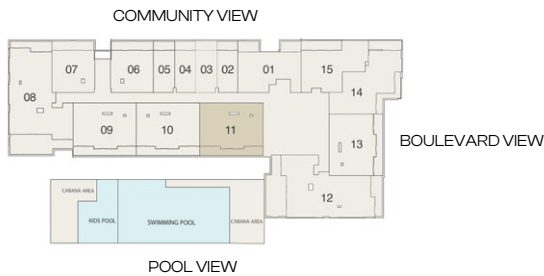
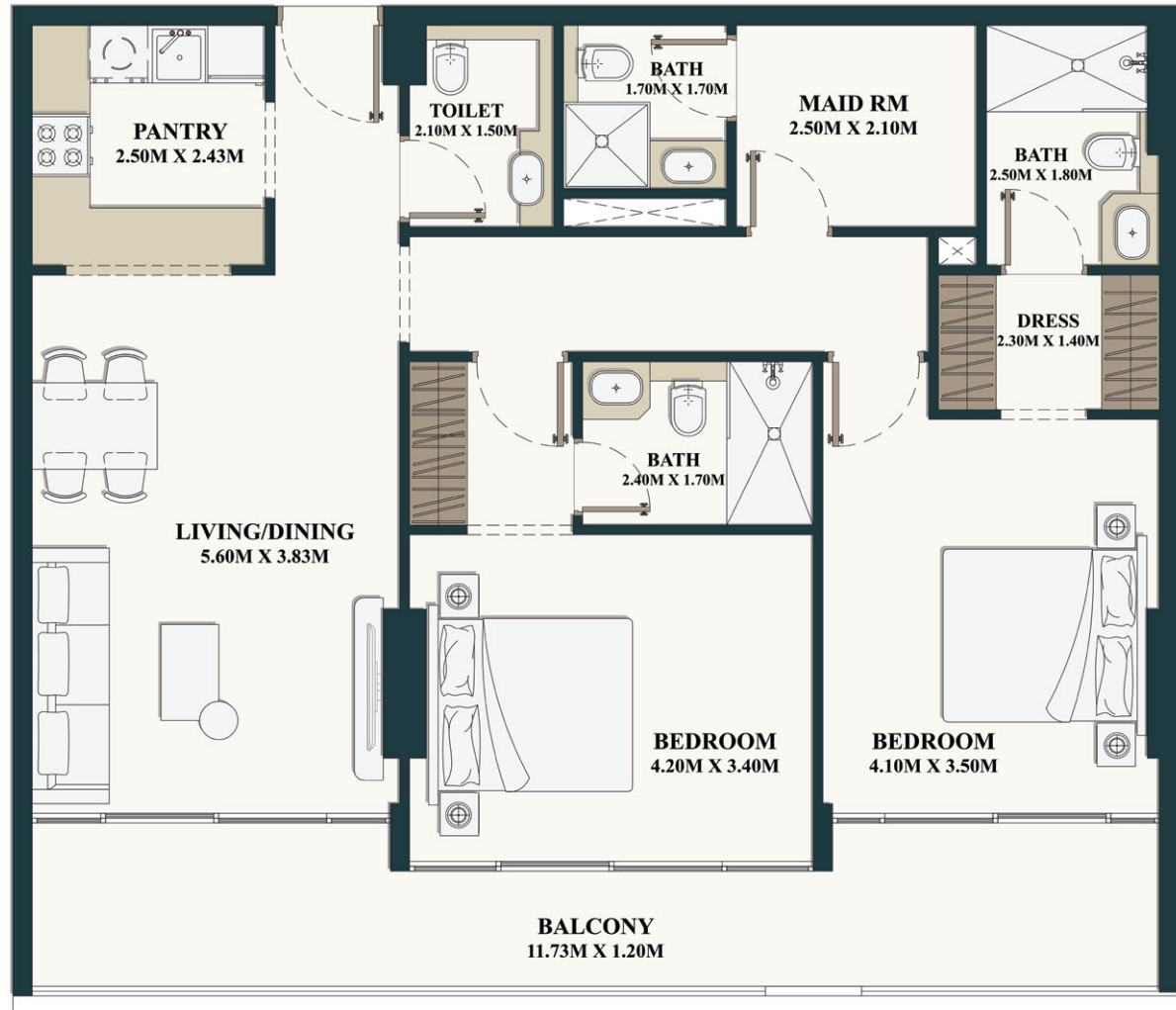
**2 BEDROOM + MAID'S ROOM**

Series 09, 10, 11, 13 (Floors 2 to 8)

Internal Living Area 1086.94 sq. ft.

Balcony Area 203.11 sq. ft.

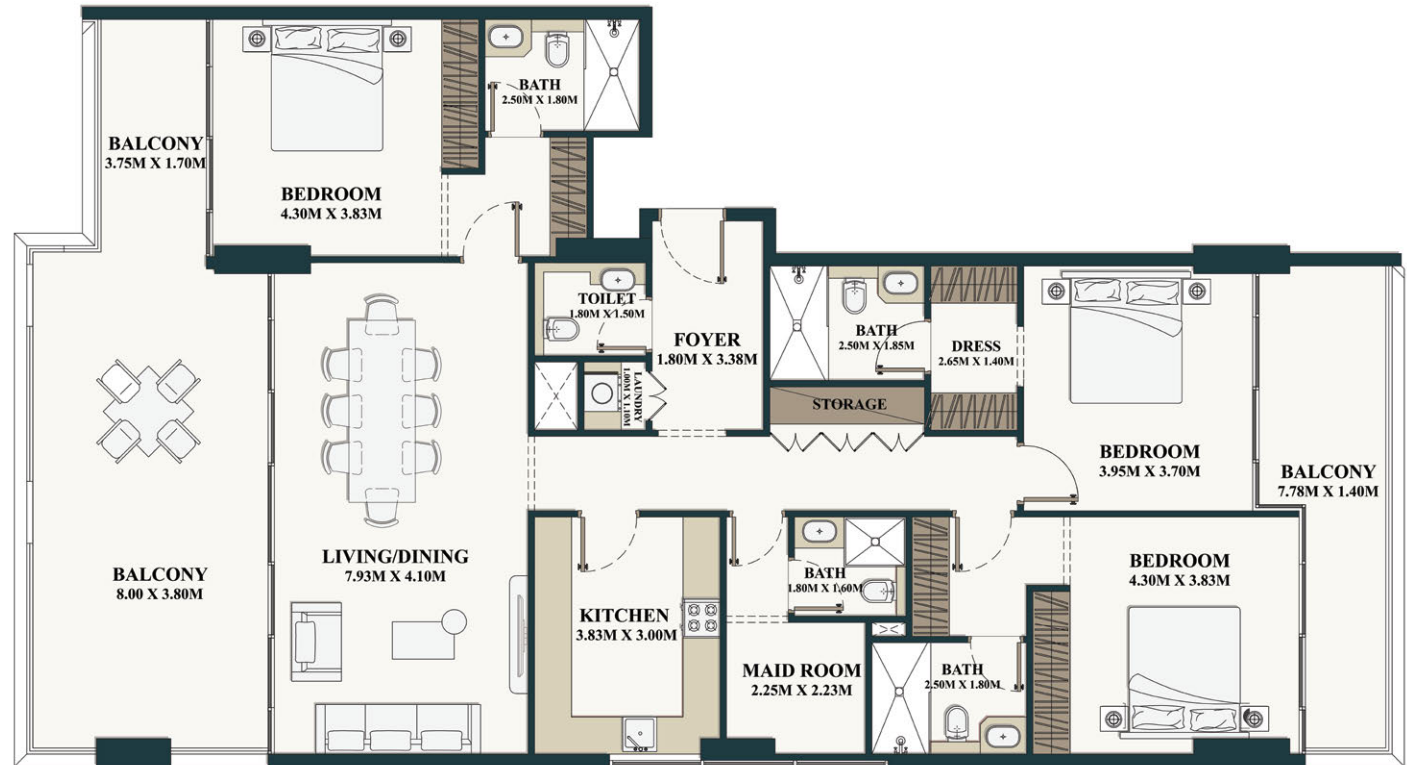
Total Area 1290.05 sq. ft.



**3 BEDROOM + MAID'S ROOM**

Series 08, 12 ( Floors 2 to 8 )

Internal Living Area	1699.84 sq. ft.
Balcony Area	556.28 sq. ft.
<b>Total Area</b>	<b>2256.12 sq. ft.</b>



SILICON OASIS, DUBAI  
BELLE VIE BY ZIMAYA

COMMUNITY VIEW



BOULEVARD VIEW

POOL VIEW

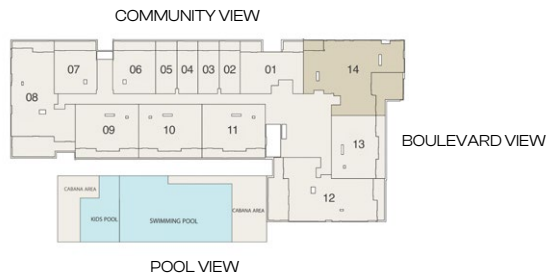
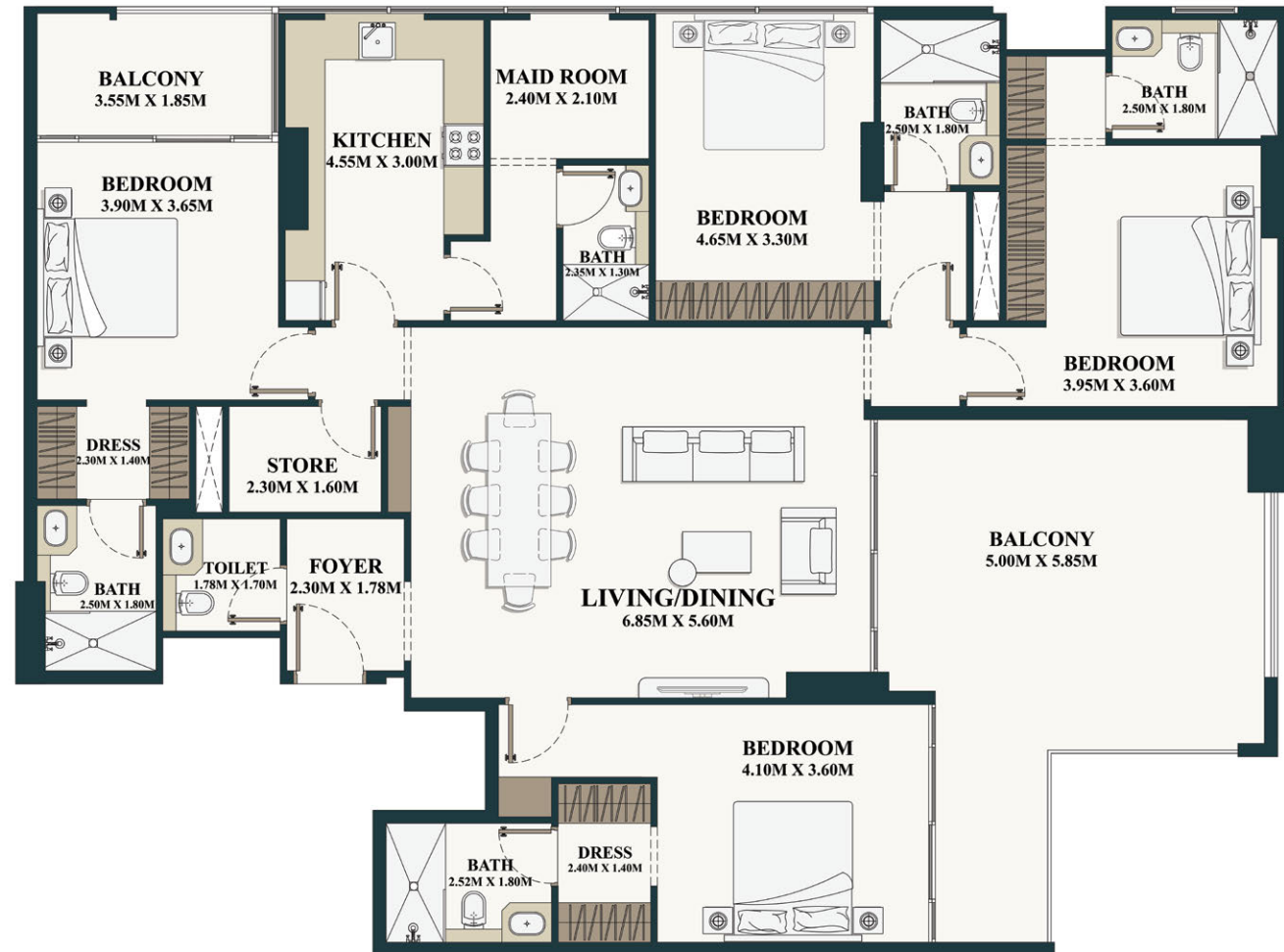




**4 BEDROOM +  
MAID'S ROOM +  
STORE**

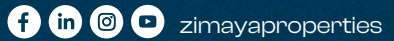
Series 14 (Floors 3, 5, 7)

Internal Living Area	1996.06 sq. ft.
Balcony Area	458.54 sq. ft.
<b>Total Area</b>	<b>2454.60 sq. ft.</b>





Office #107, Building #6, Bay Square,  
Business Bay, Dubai, UAE.



For more details, call 800ZIMAYA

---

DISCLAIMER:

1. All drawings and dimensions are approximate. | 2. Information is subject to change without prior notice at developer's absolute discretion.  
3. Actual area may vary from the stated area. | 4. Drawings not to scale. | 5. All images used are for illustrative purposes only and do not represent the actual size, features, specifications, fittings, and furnishings. | 6. The developer reserves the right to make revisions/alterations, at its absolute discretion, without any liability whatsoever.  
7. The units are taken from the typical floor of the of the building and columns may vary in size depending on the floor level.