


WASL

A low-angle photograph of a modern high-rise building with balconies, set against a clear blue sky. Several white birds are flying in the sky. In the foreground, the top of a palm tree is visible. The building has a dark facade with light-colored balconies and railings. The lighting suggests it's either early morning or late afternoon.

Step into a sanctuary where tranquility meets effortless connectivity. Wasl is a retreat that whispers of elegance and calm, yet stands just moments away from the pulse of Dubai.

Here, the city's vibrant energy flows within reach, while your home remains a haven of peace where luxury embraces you, and every journey begins with ease.

YOUR GATEWAY
TO SOPHISTICATED
URBAN LIVING.



COMFORT. CONVENIENCE . LUXURY



PROXIMITY TO KEY LANDMARKS

10 MIN
JEBEL ALI PORT
AND BEACH

15 MIN
AL MAKTOUM
INTERNATIONAL AIRPORT

15 MIN
EXPO 2020 DISTRICT

[CLICK HERE FOR LOCATION](#)





AL MAKTOUM INTERNATIONAL AIRPORT

A short drive connects you to one of the world's leading airports, making both business and leisure travel exceptionally convenient.



JEBEL ALI PORT AND BEACH

Proximity to this major port facilitates international business engagements, while the nearby beach offers a serene escape for relaxation and leisure.



IBN BATTUTA MALL AND FESTIVAL PLAZA MALL

These premier shopping and entertainment destinations, featuring renowned outlets like IKEA and ACE, are just moments away, catering to all your retail and dining desires.



EXPO 2020 DISTRICT

Located nearby, this hub has become a focal point for innovation and enterprise, attracting businesses and offering a plethora of opportunities.

A TAPESTRY OF
CULTURAL AND SPIRITUAL
CONNECTIVITY





MOSQUES

Al Rustmani Masjid, Omar Bin Abdul Aziz Mosque, Nakheel Mosque, and Masjid Abdullah Ali Al-Chaafar are all within a 3 to 10-minute drive, offering convenient access for daily prayers and spiritual gatherings.

CHURCHES

A cluster of esteemed churches, including St. Mina Church, Dubai Mar Thoma Church, and St. Francis of Assisi Catholic Church, are located just a short drive away, serving the spiritual needs of the Christian community.

HINDU TEMPLE DUBAI

A short distance away lies the newly inaugurated Hindu Temple in Jebel Ali. Opened on October 2022, this temple stands as a beacon for the Hindu community, offering a sanctuary for worship and reflection.

GURUDWARA

The Guru Nanak Darbar Sikh Gurudwara, one of the largest in the region, is easily accessible, providing a spiritual haven for the Sikh community.



LUXURIOUS LIVING
SPACES TAILORED
TO YOUR LIFESTYLE

AREA OF PLOT	39,206 Sq.ft.
TOTAL BUILT UP AREA	399,089 Sq.ft.
Total Floors	12
No. of Lifts	4
No. of Podiums	2
No. of Basement	1
Total No. Of Parking Proposed	417

UNITS	SIZE RANGE (SQ.FT.)	NO OF UNITS
STUDIO	351.44 - 533.89	245 units
1BHK	540.67 - 1225.91	134 units
2 BHK	773.82 - 1352.28	37 units



STUDIO 65/35 PYMENT PLAN 650K AED



1-BEDROOM 1.03M AED



2-BEDROOM 1.2M AED







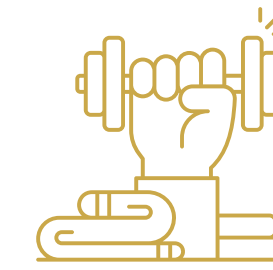


UNPARALLELED
AMENITIES





FITNESS AND WELLNESS



Separate gyms for men and women, a CrossFit area, dedicated yoga spaces, and swimming pools ensure a comprehensive wellness experience.

FAMILY-FRIENDLY SPACES



Children's play areas, a splash pad, and kids' pools provide safe and engaging environments for the younger residents.

SOCIAL AND RECREATIONAL FACILITIES

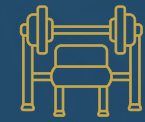


A cinema, barbecue area, outdoor seating, and a basketball court foster community interaction and leisure.

PREMIUM AMENITIES FOR A LUXURIOUS LIFESTYLE

The development is designed with a comprehensive array of luxury amenities spread across different levels to ensure a vibrant and active community.

These include:



Gymnasium



Cinema



Fire Place



Outdoor Seating



Swimming Pool



Dedicated Yoga Area



BBQ Area



Jacuzzi

+more...







STRONG
IS THE NEW















EMBRACE THE FUTURE TODAY

Wasl is more than just a residence; it's a lifestyle choice that encapsulates comfort, convenience, and luxury. By addressing the common pain points of urban living, it offers a harmonious environment where residents can thrive personally and professionally.

