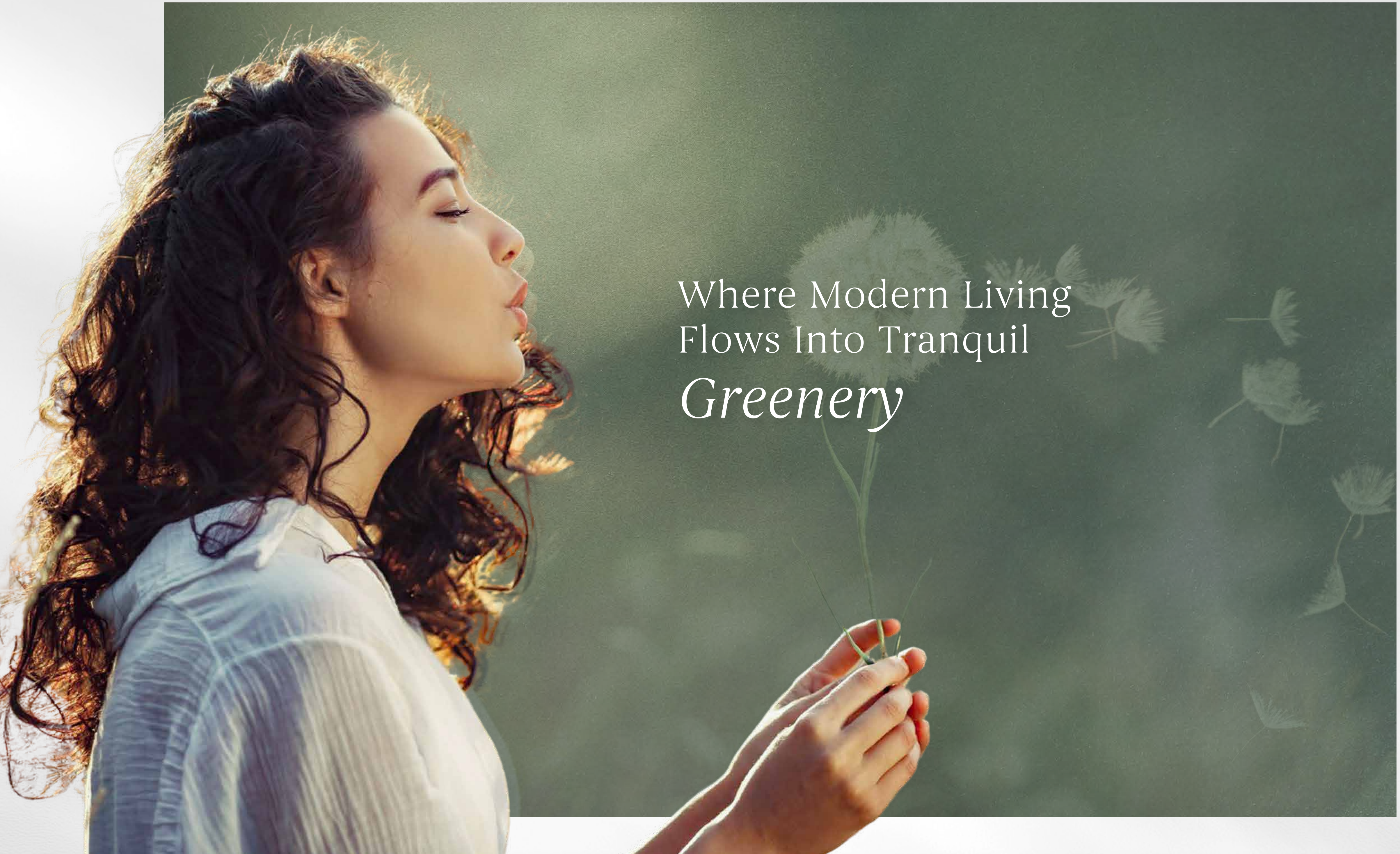


ARLINGTON
PARK II

MAJID®



Where Modern Living
Flows Into Tranquil
Greenery

A photograph of the Dubai skyline at sunset, featuring the Burj Khalifa and other skyscrapers reflected in a body of water. The sky is a mix of blue and orange, and the water is calm, creating clear reflections of the buildings.

Where Innovation Meets *Opportunity*

Dubai Land Residence Complex, one of Dubai's most promising residential zones. It offers a lifestyle that is close to everything yet, away from the noise. Whether it's a quick commute to Downtown, a peaceful walk in lush surroundings, or access to daily conveniences, Arlington Park 2 places you where it all flows together.

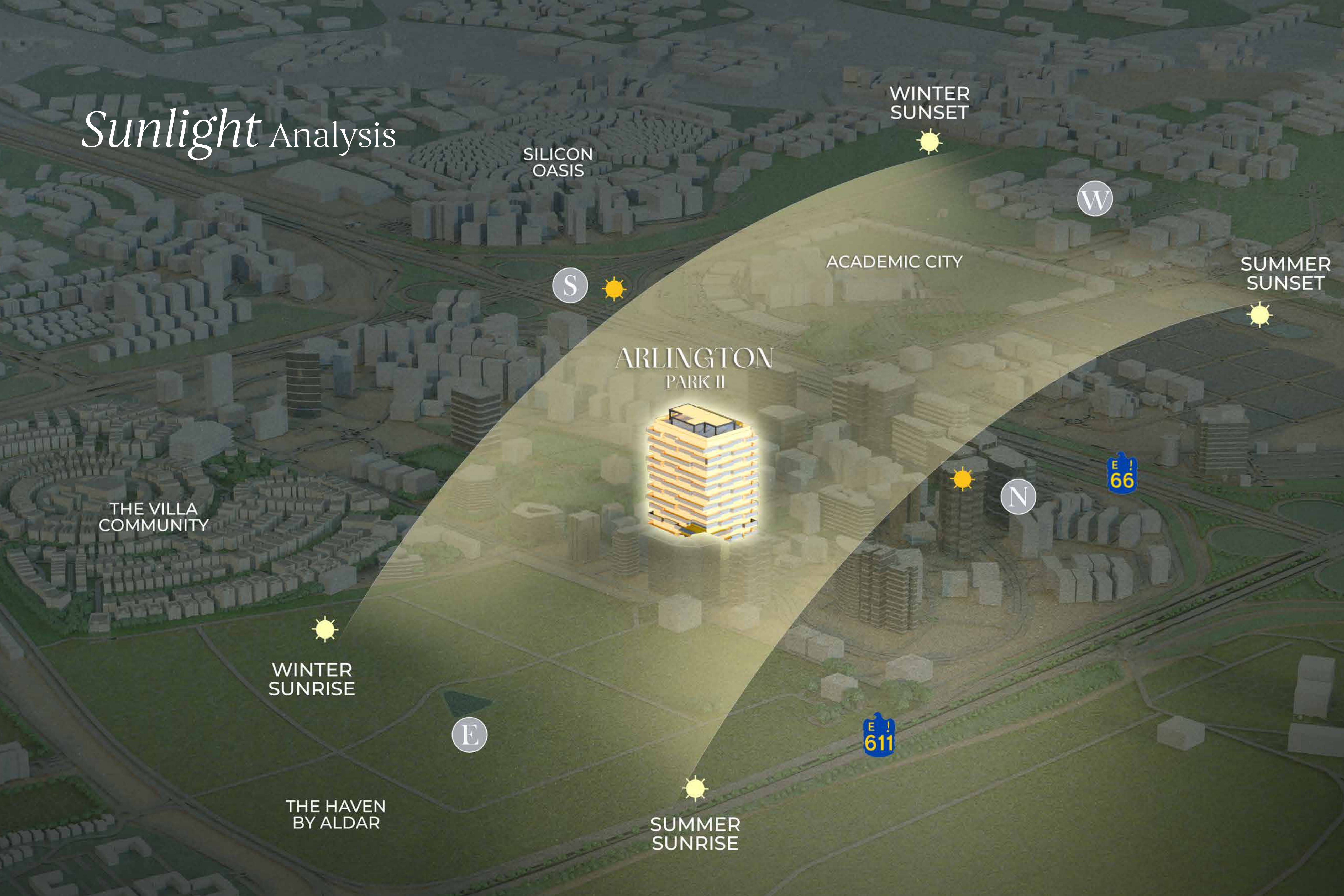


Welcome to

ARLINGTON PARK II

Arlington Park 2 offers modern apartment living in Dubai Land. The tower rises with purpose, home to 129 fully optimized apartments across studios, 1 Bedroom, 2 bedroom & 3 bedroom layouts. Every element is tailored to complement the rhythm of everyday life, from smart unit sizing to premium finishes and lifestyle-oriented spaces.

Sunlight Analysis



SILICON OASIS

WINTER SUNSET



ACADEMIC CITY

SUMMER SUNSET



ARLINGTON PARK II



THE VILLA COMMUNITY



WINTER SUNRISE



THE HAVEN BY ALDAR



SUMMER SUNRISE



Map & Driving Distance





Near Everything Far From *Ordinary*

Perfectly positioned in the heart of Dubai Land Residential Complex (DLRC), Arlington Park places you just minutes away from the places that matter most. From top-tier schools and academic hubs to vibrant shopping destinations and healthcare centers.

Whether you're planning your child's future, your next grocery run, or a relaxed weekend at the mall, everything is effortlessly within reach.

- The Aquila School – 1 minute
- GEMS FirstPoint School – The Villa – 3 minutes
- Silicon Central Mall – 7 minutes
- Dubai Silicon Oasis – 9 minutes
- Dubai International Academic City – 9 minutes

Amenities

Where Every *Amenity* Reflects Perfection

Every element has been thoughtfully curated to embody sophistication and comfort. From serene wellness spaces to world-class leisure facilities, each amenity is designed to exceed expectation and inspire everyday indulgence. Here, luxury is not an addition — it's a standard woven into every experience, reflecting the art of perfect living.



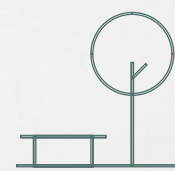
Exclusive Lounge



Community & Park View



Chic Bar Area



Lush Garden Spaces



BBQ Area



Sauna Room



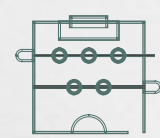
Infinity Pool



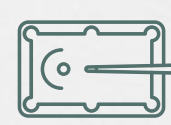
Gymnasium



Yoga Space



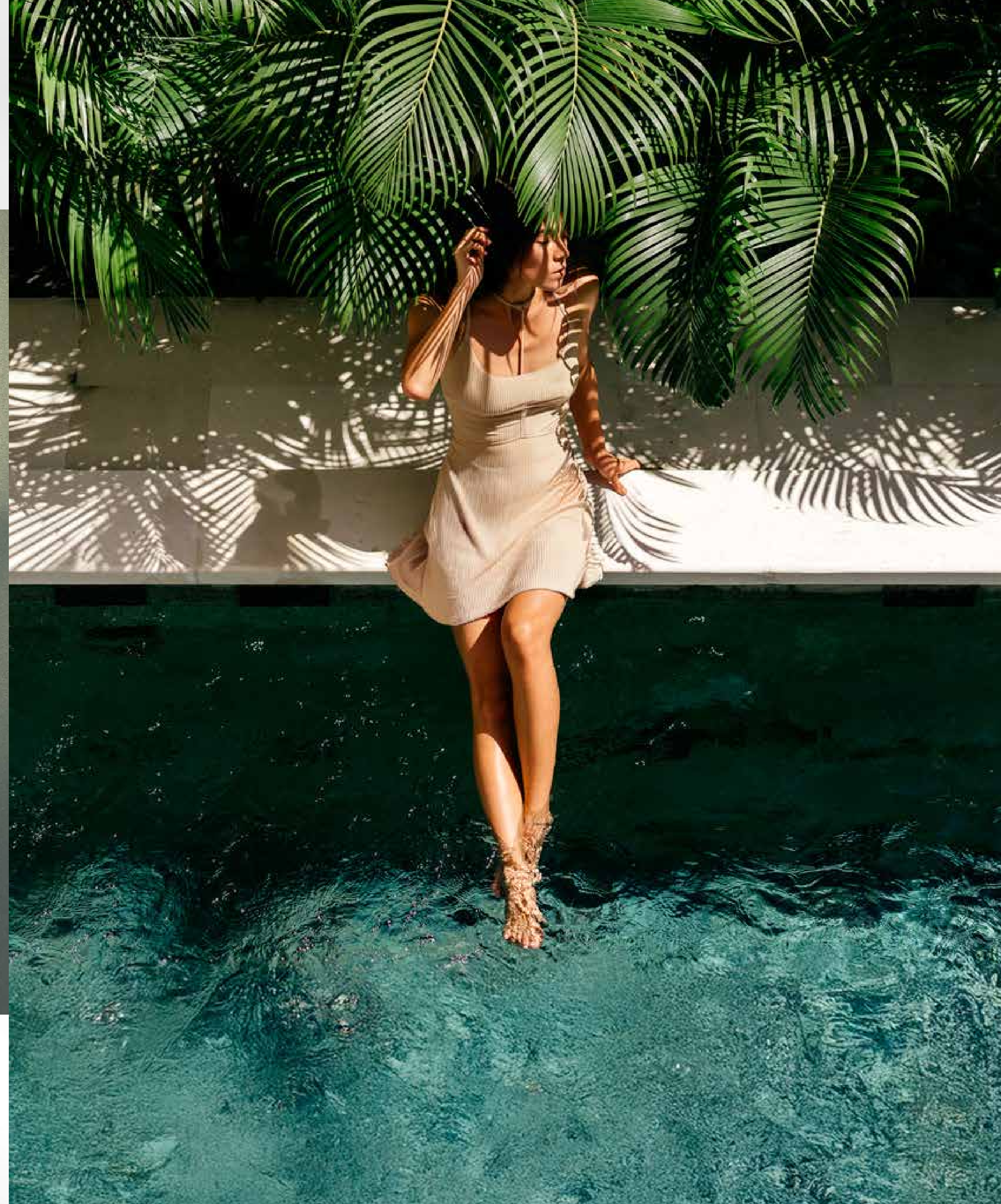
Foosball Table



Pool Table

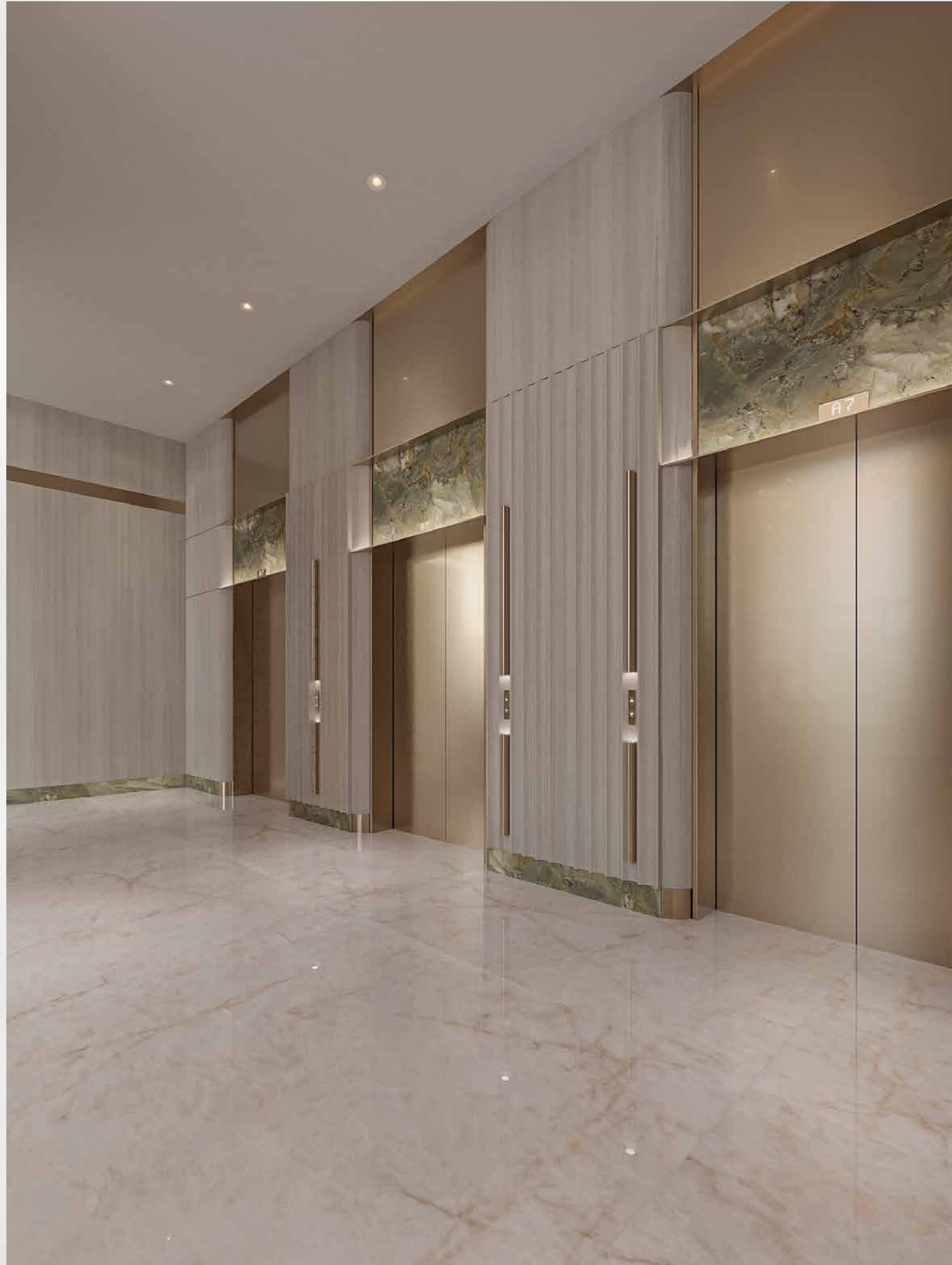


Cold Plunge





Lobby



The lobby at Arlington Park 2 offers a calm and elegant welcome, defined by refined materials, soft lighting, and modern architectural detailing. Every element is curated to create a sense of understated luxury, setting the tone for the lifestyle within the community. With its clean lines and warm, contemporary ambiance, the space reflects the project's commitment to comfort, sophistication, and beautifully crafted living.



Gym



Lounge



Co-Working Space



Cold Plunge



Sauna



Pool view

Where Life Becomes
an *Experience*



Every moment at Arlington Park 2 is designed
to awaken a sense of connection, comfort, and timeless luxury

A woman with blonde hair, wearing a light-colored trench coat over a white blouse and dark trousers, is walking on a city street at night. She is looking upwards and to the right. The street is illuminated by streetlights, and there are buildings and a tree in the background. The overall mood is sophisticated and urban.

Residences



Where Everyday
Living Turns
Extraordinary

Arlington Park 2 is where the rhythm of modern life rises beyond comfort, embracing the art of the extraordinary



Dining Area



Living Area

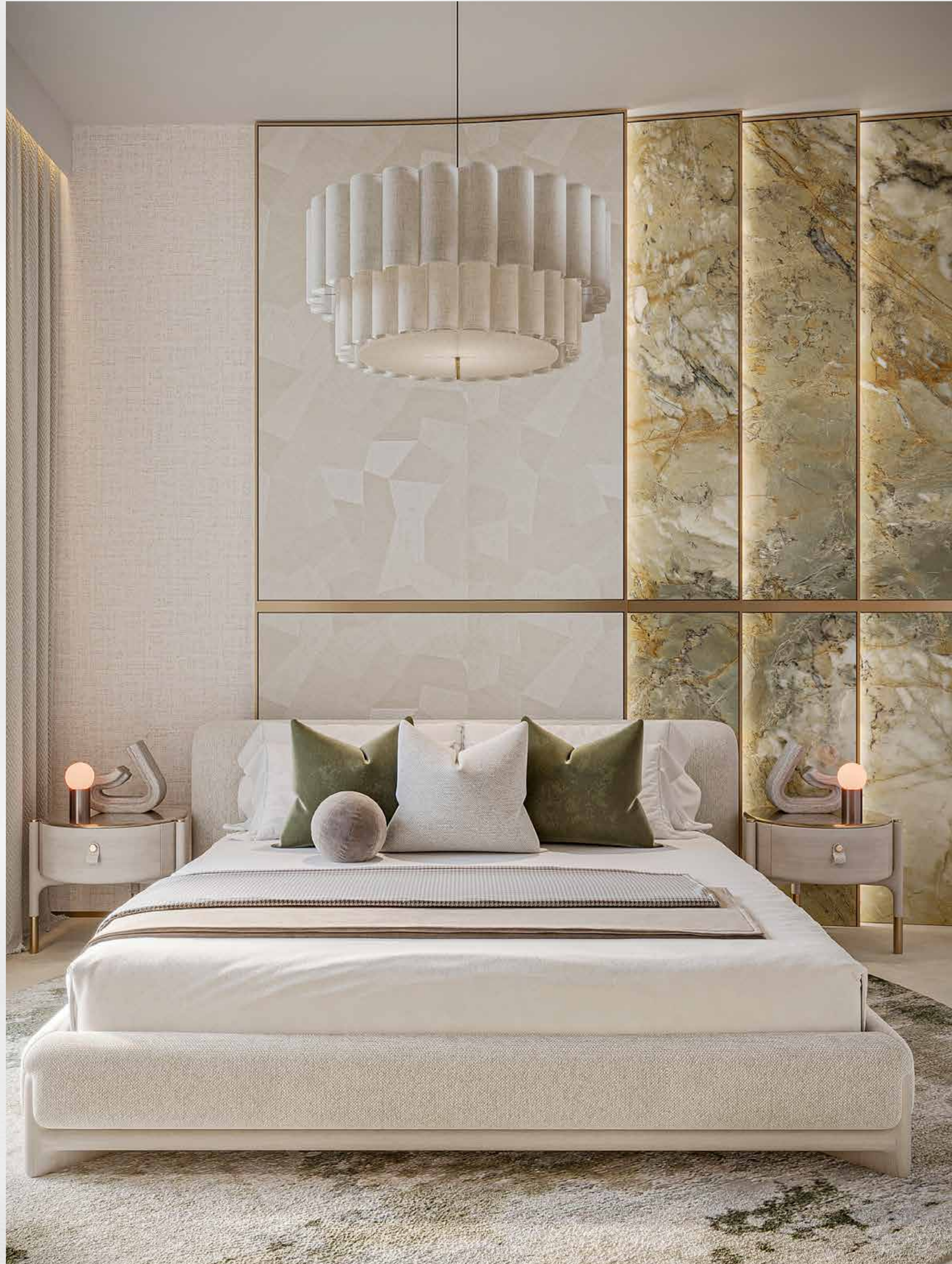


Designed for Dreams, Crafted for *Comfort*

A modern retreat where style and serenity coexist. Sleek lines, plush fabrics, and ambient lighting shape an atmosphere of effortless luxury every detail inviting rest, reflection, and renewal



Bedroom



The Arlington Park 2 bedroom is envisioned as a serene, elevated sanctuary, combining generous space, refined finishes, and a thoughtfully curated design that invites comfort, quiet sophistication, and a truly modern living experience at the heart of Dubailand.”

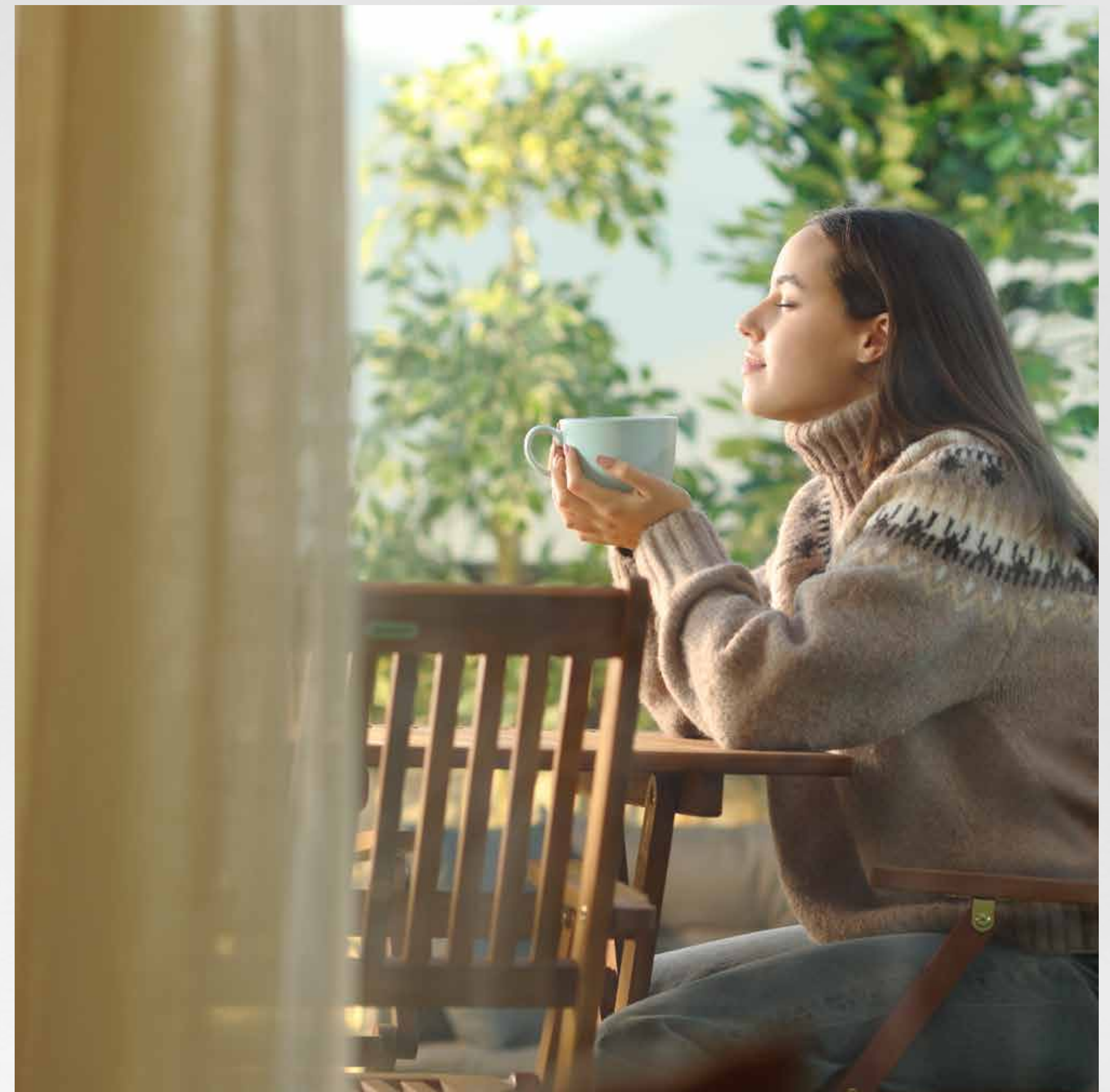
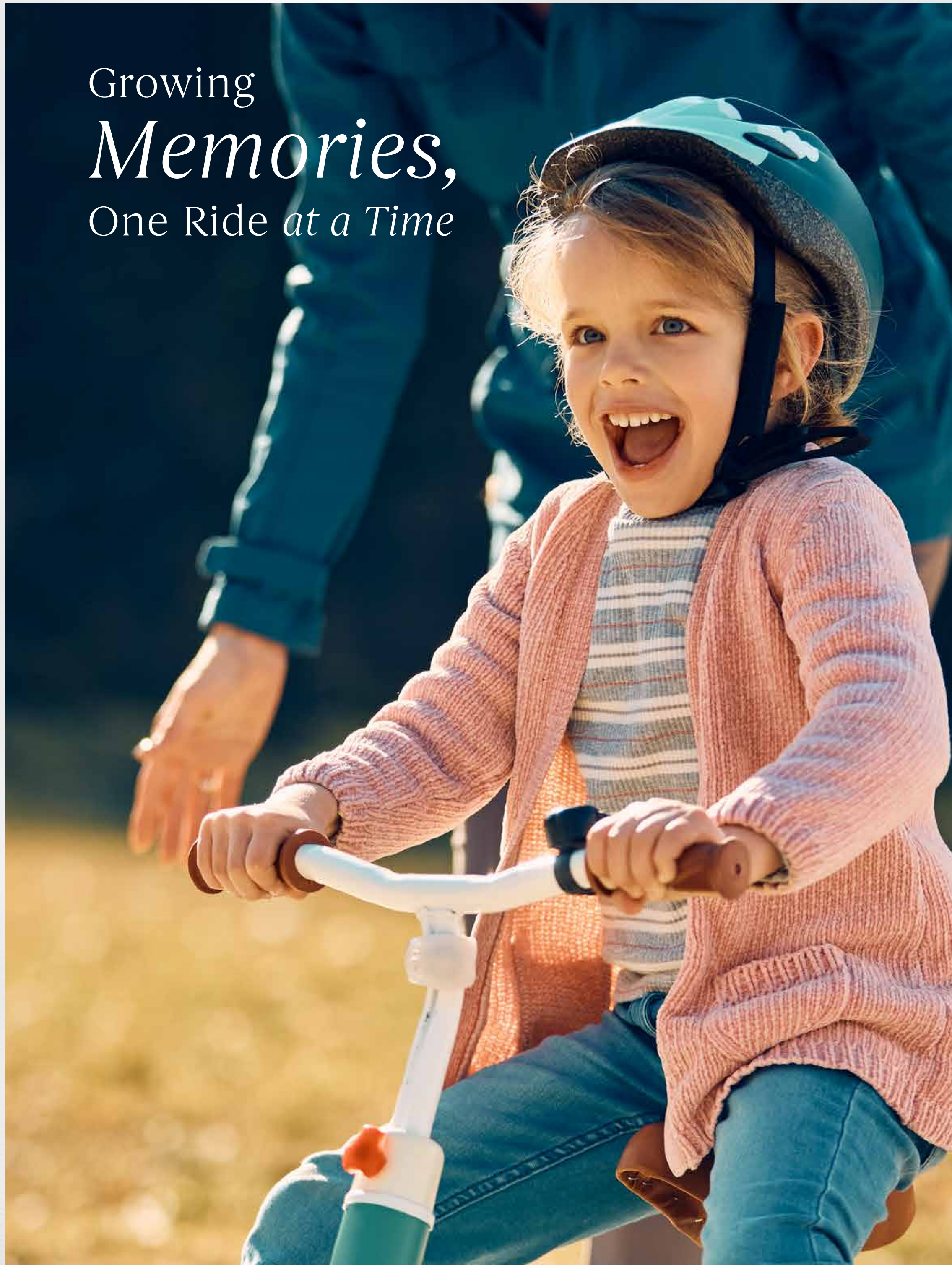


Kitchen

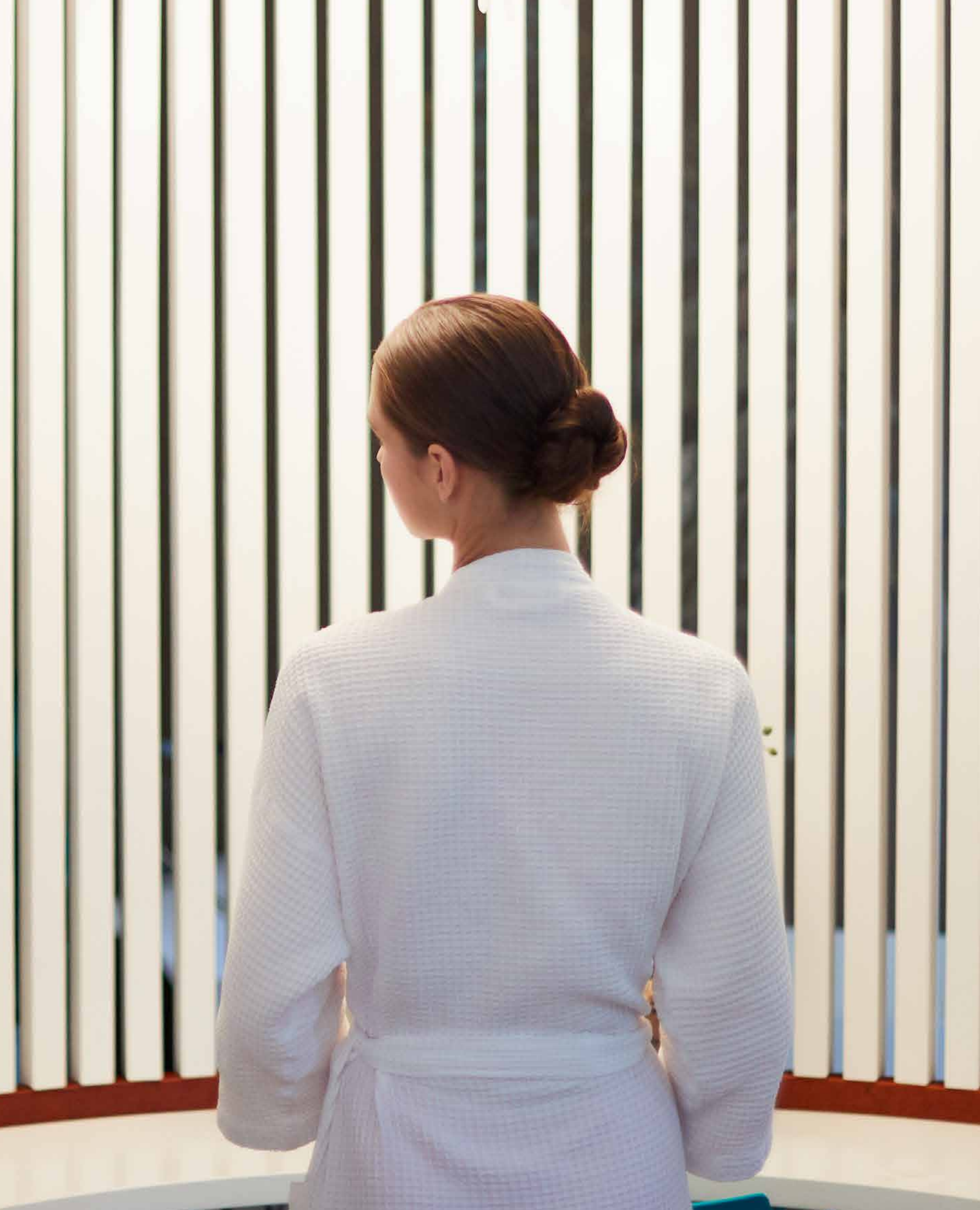


The Arlington Park 2 kitchen is crafted with refined elegance, offering sleek finishes, thoughtful functionality, and a modern design that elevates everyday living with effortless sophistication

Growing
Memories,
One Ride *at a Time*



Every smile, every laugh, every little milestone all find a home in spaces designed for families to flourish. A place where mornings begin with sunshine and evenings end with gratitude.



Elevated Bathroom *Elegance*

The Bathrooms at Arlington Park 2 are crafted with refined detailing, premium finishes, and a clean modern aesthetic, creating a serene space that reflects comfort, sophistication, and everyday luxury



Bathroom



Step into an interior shaped by classic sophistication rich finishes, subtle details, and a harmony of colors that elevate everyday living with a sense of quiet luxury



Option 1

65/35 Payment Plan



Option 2

55/45 Payment Plan





Our Milestone *Projects*

Our milestone projects at Majid Developments represent a thoughtful evolution of our commitment to creating enduring communities—beginning with Mayfair Gardens in Jumeirah Village Circle, a project that embodies stylish architecture, smart home features, and a calm residential atmosphere designed for modern families, and continuing with Arlington Park in the Dubailand Residence Complex, a fully sold-out development celebrated for its exceptional design precision, curated amenities, and seamless connectivity—together reflecting our philosophy of delivering “affordable luxury” through meticulous sourcing, disciplined planning, and an unwavering focus on long-term value, where every detail from material selection to spatial planning is guided by our vision to offer homes that elevate everyday living, ensuring that residents experience comfort, convenience, and contemporary elegance at every step; these projects not only mark major milestones in our journey as a developer but also reinforce our reputation for reliability, financial strength, and customer-centric delivery, setting the foundation for our upcoming AED 500 million pipeline of future developments that will further define our place in Dubai’s real estate landscape as a brand committed to quality, integrity, and the promise of lifetime living.

Embark on Your MAJID *journey*

Step into a world of refined living with Majid Developments. Schedule a private consultation or exclusive viewing to explore our exceptional properties. Whether you're seeking your forever home or a rewarding investment, our expert team is committed to guiding you every step of the way. Begin your journey with Majid Developments today — where vision meets lifestyle.

For more inquires

Majid Developments
The Burlington Tower - Suite 110 - Marasi Dr
Business Bay - Dubai
800 MAJID (62543)

www.majiddevelopments.com

ARLINGTON
PARK II

BY

MAJID[®]