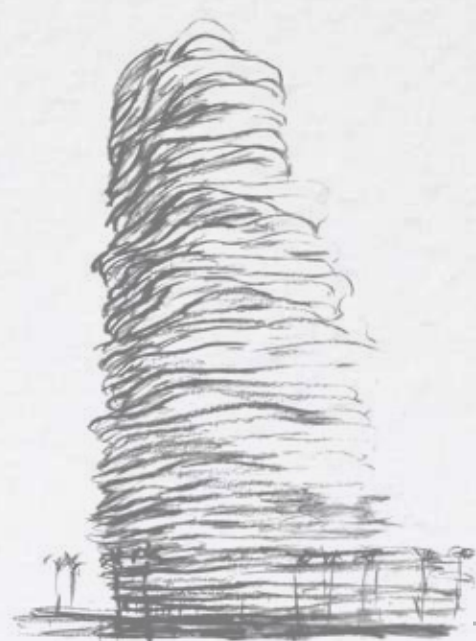




WEDYAN - THE CANAL

PROJECT SNAPSHOT





Al Ghurair is one of the largest diversified family businesses in the Middle East, with operations in five strategic sectors: Foods, Mobility, Development, Infrastructure and Property Management.

Established in 1960 as a trading business, Al Ghurair was one of the first pillars of industry and commerce in the UAE. From modest beginnings, and with a proud history of innovation and entrepreneurship, the Al Ghurair family name is synonymous with the heritage, evolution, and vision of the UAE.

Al Ghurair has played a pivotal role in shaping Dubai's skyline through complex infrastructure and construction projects, contributing to some of the city's most iconic landmarks, as well as large scale developments across the Middle East, Africa and India. With over 7,000 residential apartments, villas, and commercial units delivered across more than 120 properties, and nearly 1,000 hotel rooms and serviced units, Al Ghurair has shaped the urban landscape of Dubai even further.

Headquartered in Dubai, Al Ghurair's diversified operations span more than 20 countries across the globe, employing approximately 28,000 people. Today, Al Ghurair continues to build on its enduring 60+ year legacy, guided by its purpose: 'In pursuit of better', as it strives to facilitate meaningful change across the communities within which it operates.



Al Ghurair Collection represents an exciting new chapter in our journey, an evolution of our business.

Our aim isn't simply to offer exquisite residences; it's to inspire a new way of living Dubai.

Here, our focus extends beyond aesthetics. We are not just developing properties; we are bringing them to life - where design, innovation, and the natural world come together to create memorable experiences.

We identify and collaborate with world renowned architects, who understand our vision and craft unique residences that are as functional as they are beautiful, bespoke to its location and designed for exceptional living.

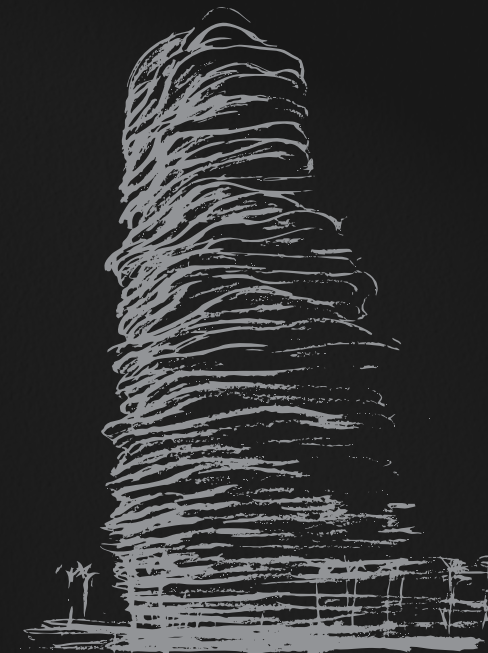
Kengo Kuma's first project in Dubai

Renowned for his masterful integration of natural materials, light, and the surrounding environment, Kengo Kuma is a world famous Japanese architect with a distinctive design approach that seeks to blend structures into its landscapes.

"Our design philosophy is harmonising and merging with nature to create a seamless connection between architecture, people and environment.

In this project, our purpose is to create a high rise as not a monotonous experience but a diverse and expressive landscape which strongly connects to locality."

- Kengo Kuma





World Class Landscaping Designed by Gustafson Porter + Bowman

Our landscapes are designed in collaboration with Gustafson Porter + Bowman, the award-winning, London based practice behind some of the most celebrated public spaces in the world. Their philosophy of weaving together nature, culture, and human experiences ensures that every outdoor space within Wedyan is not only beautiful, but enduring, sustainable and enriching.

This is Wedyan



Façade Expression



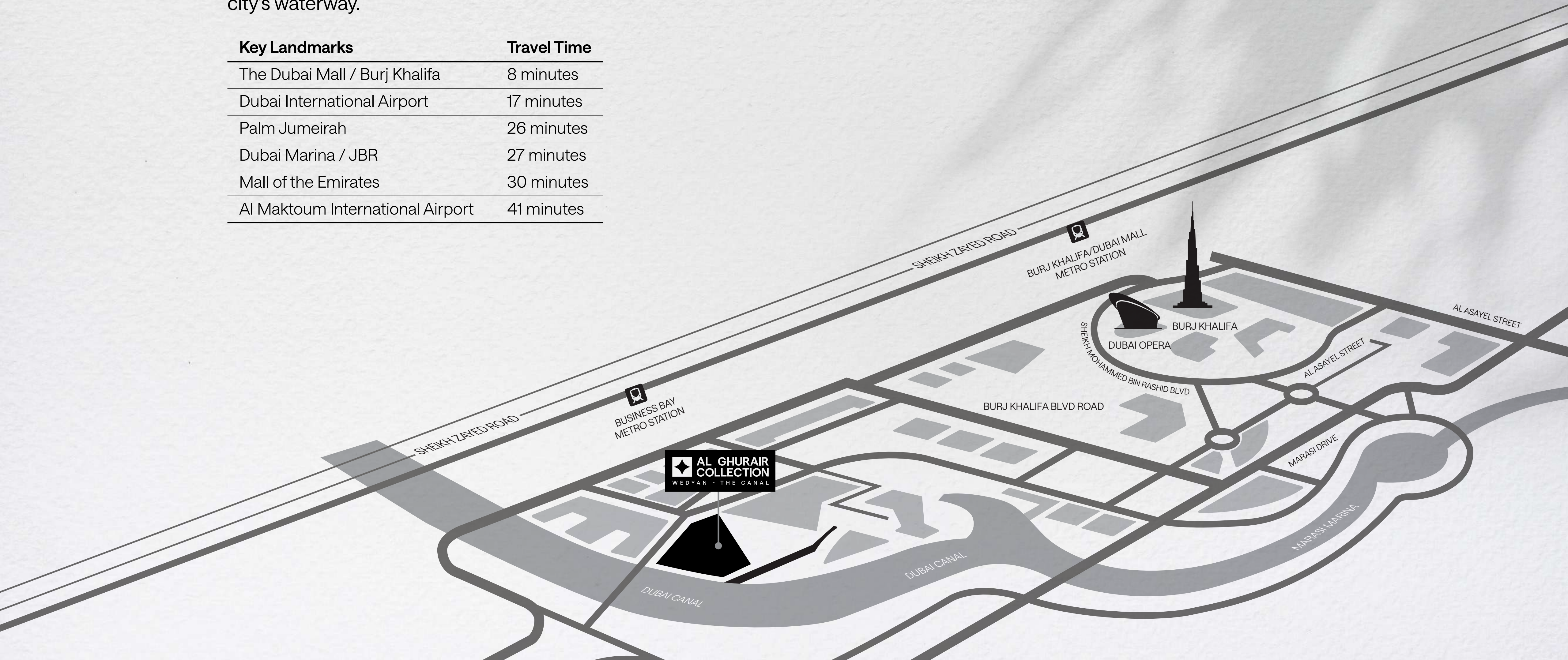
Where City Meets Home



The Location

Nestled along the bend of the Dubai Canal, Wedyan stands as an organic extension of the city's waterway.

Key Landmarks	Travel Time
The Dubai Mall / Burj Khalifa	8 minutes
Dubai International Airport	17 minutes
Palm Jumeirah	26 minutes
Dubai Marina / JBR	27 minutes
Mall of the Emirates	30 minutes
Al Maktoum International Airport	41 minutes



About Wedyan

Wedyan is the first residential development by Al Ghurair Collection in collaboration with world-famous Japanese architect, Kengo Kuma. Located along the Dubai Canal, Wedyan is truly a masterpiece designed with a philosophy that integrates natural elements with contemporary aesthetics.

- 3B+G+46 floors
- 149 units

Type	Number of Units	Average Internal Area	Average External Area	Average Total Area
3 Bedrooms	89	4,013	2,671	6,684
4 Bedrooms	51	4,405	2,657	7,062
5 Bedrooms	6	5,653	4,518	10,171
Penthouse	2	9,379	10,130	19,509
The Sky Villa	1	20,749	22,810	43,059
	149			



What Makes Wedyan Stand Out

Amenity Spaces (Across Multiple Levels)

- Level 2 (The Valley): Spin studio, padel court, gym (weights, cardio, reformer studio), yoga area, boxing, personal training spaces, recovery lounge.
- Level 3 (The Shore): Reception, café, golf simulator, cinema, kids club, games lounge, juice bar, club lounge, lap pool, lagoon pool, kids splash/garden play.
- Level 17 (The Cave): Wellness reception, treatment and massage rooms, beauty studio and salon, gentlemen's grooming room, gradual immersion pool, open-air bathing pools, steam room, sauna, ice chamber, traditional hammam, changing facilities.
- Level 36 (The Mountain): Arrival lounge, conference/private dining, prep kitchen, majlis, games parlour, meeting suites, library, co-working, cigar lounge, boardroom, and podcast studio.

Wellness & Sustainability

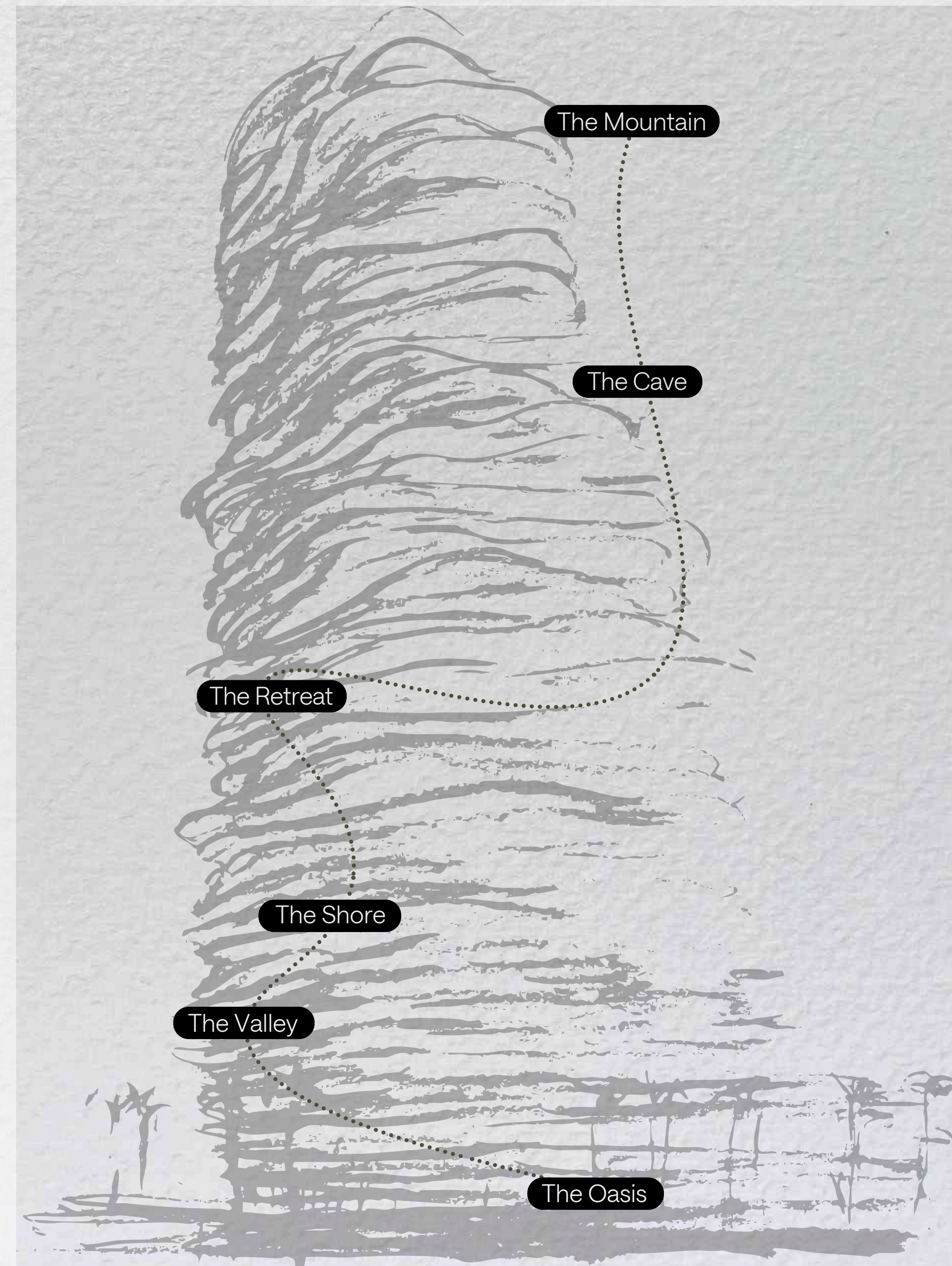
- Filtered Air: The project emphasizes wellness with advanced air filtration systems for clean, healthy indoor environments.
- Filtered Water: Residents benefit from filtered water throughout the development, supporting health and sustainability.

Other Highlights

- Landscaped outdoor spaces and pavilions designed for relaxation and community gatherings.
- Temperature and humidity storage for collectable cars
- Integration of natural materials and light, reflecting Kengo Kuma's philosophy of harmonizing architecture with the environment.
- Exclusive club and lounge spaces for residents' social and business needs.
- Dedicated spacious storage areas at basement level



The journey



The Arrival

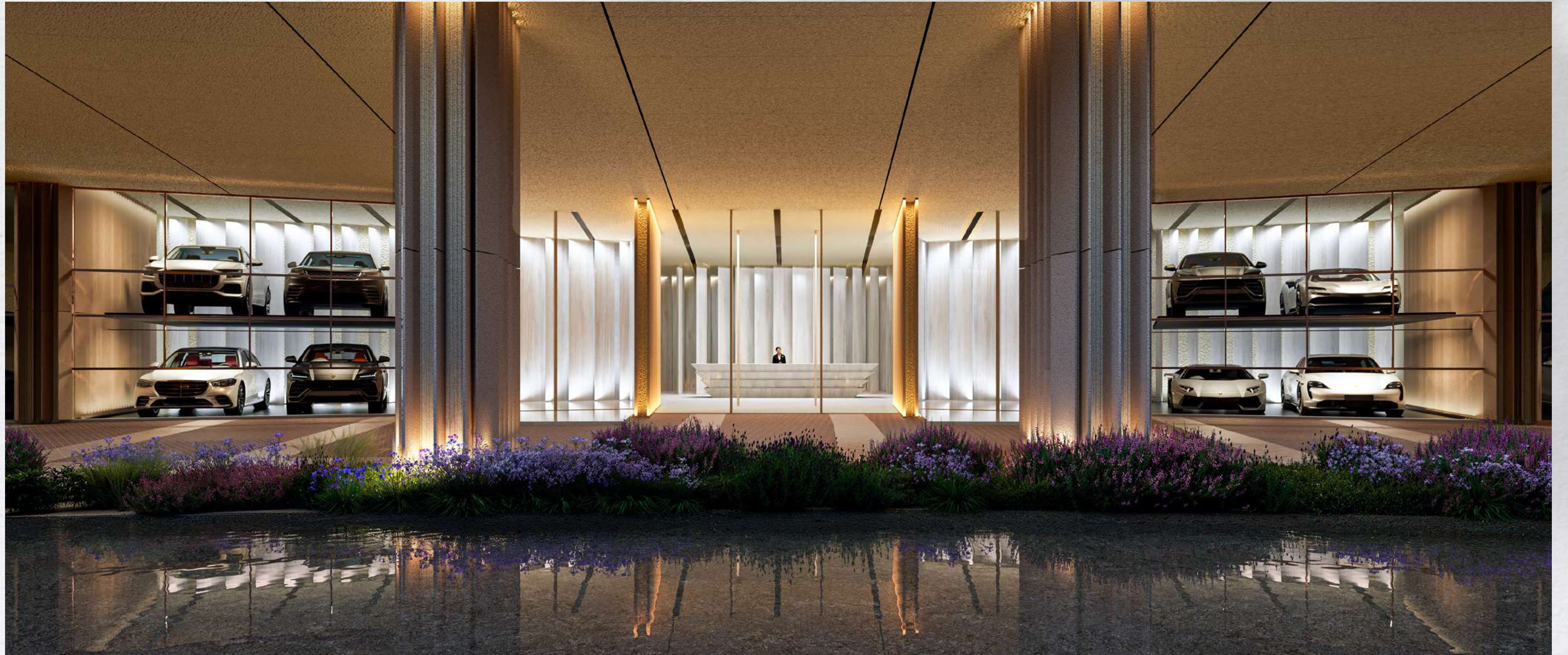
The Oasis



The Oasis



The Oasis

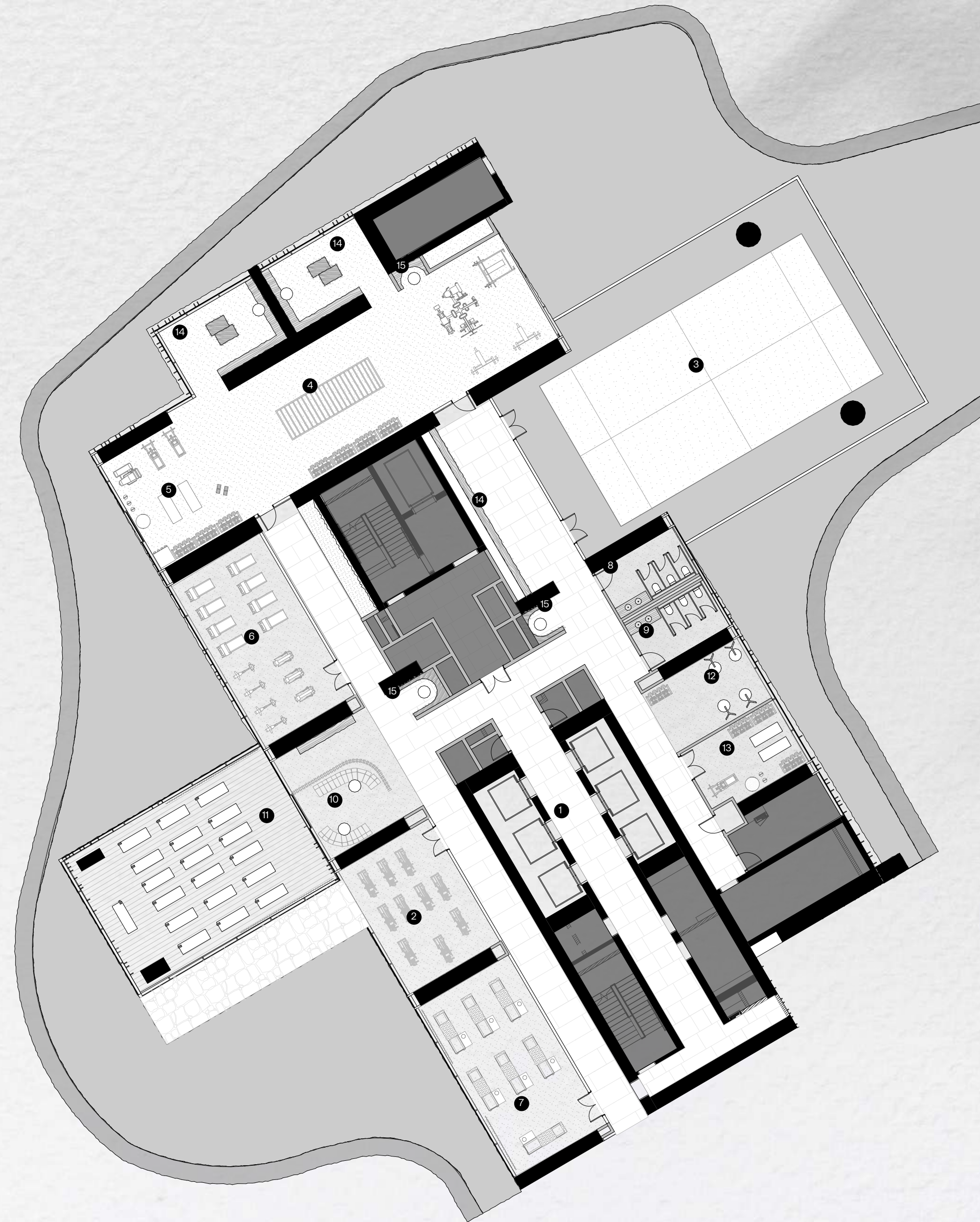


The Amenities

The Valley

Level 2

1. Lift Lobby
2. Spin
3. Padel Court
4. Gym
5. Weights
6. Cardio
7. Reformer Studio
8. Female WC
9. Male WC
10. Recovery Lounge
11. Yoga
12. Boxing
13. Personal Training
14. Lockers
15. Water Point



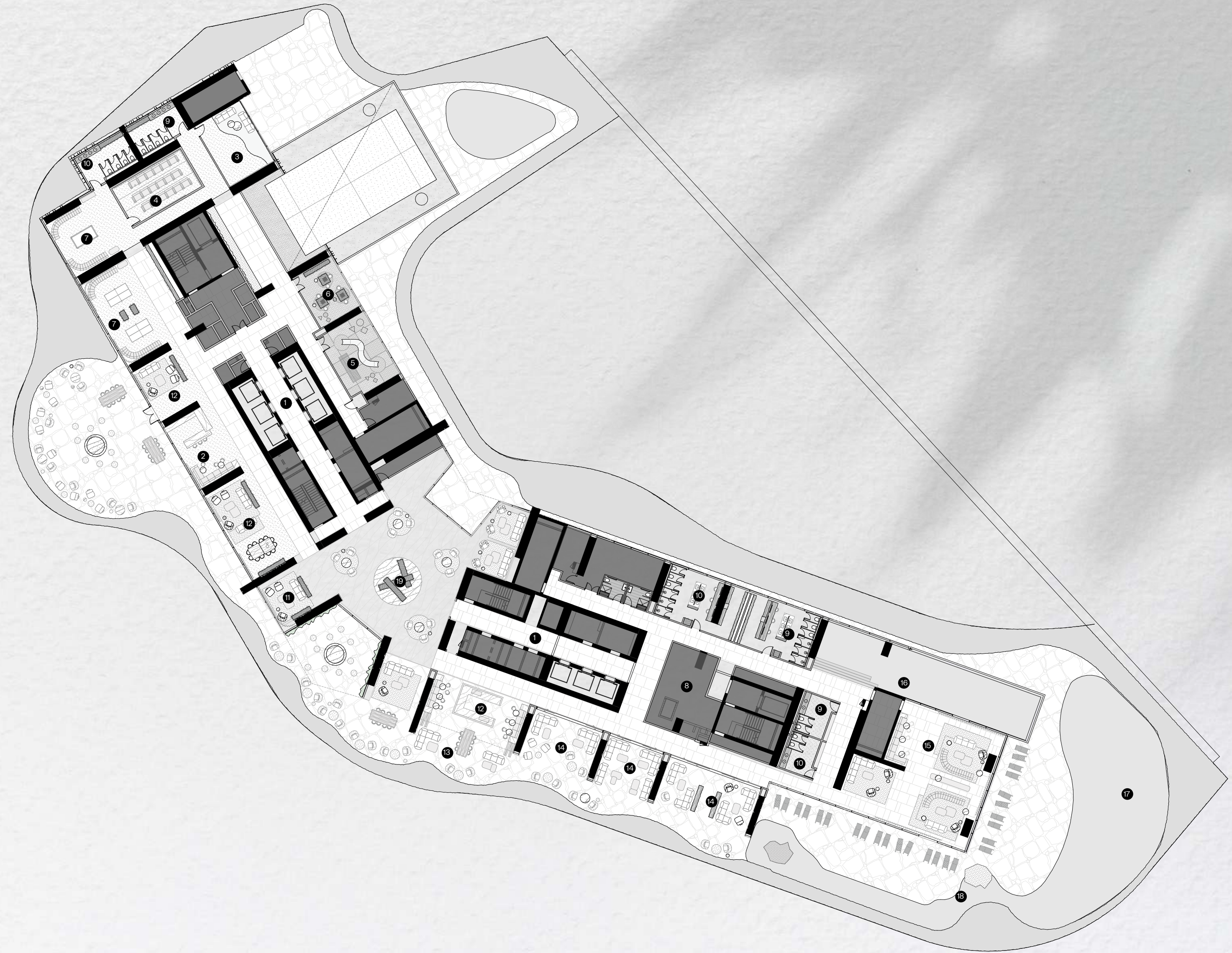
The Valley



The Shore

Level 3

1. Lift Lobby
2. Cafe
3. Golf Simulator
4. Cinema
5. Kids Club
6. Kids Activities
7. Games Lounge
8. Commercial Kitchen
9. Male WC / Changing Rooms
10. Female WC / Changing Rooms
11. Lounge
12. Bar
13. Bar Terrace
14. Adults Lounge
15. Club Lounge
16. Lap Pool
17. Adult Pool
18. Kids Splash / Garden Play
19. Reception



The Shore



The Shore



The Shore



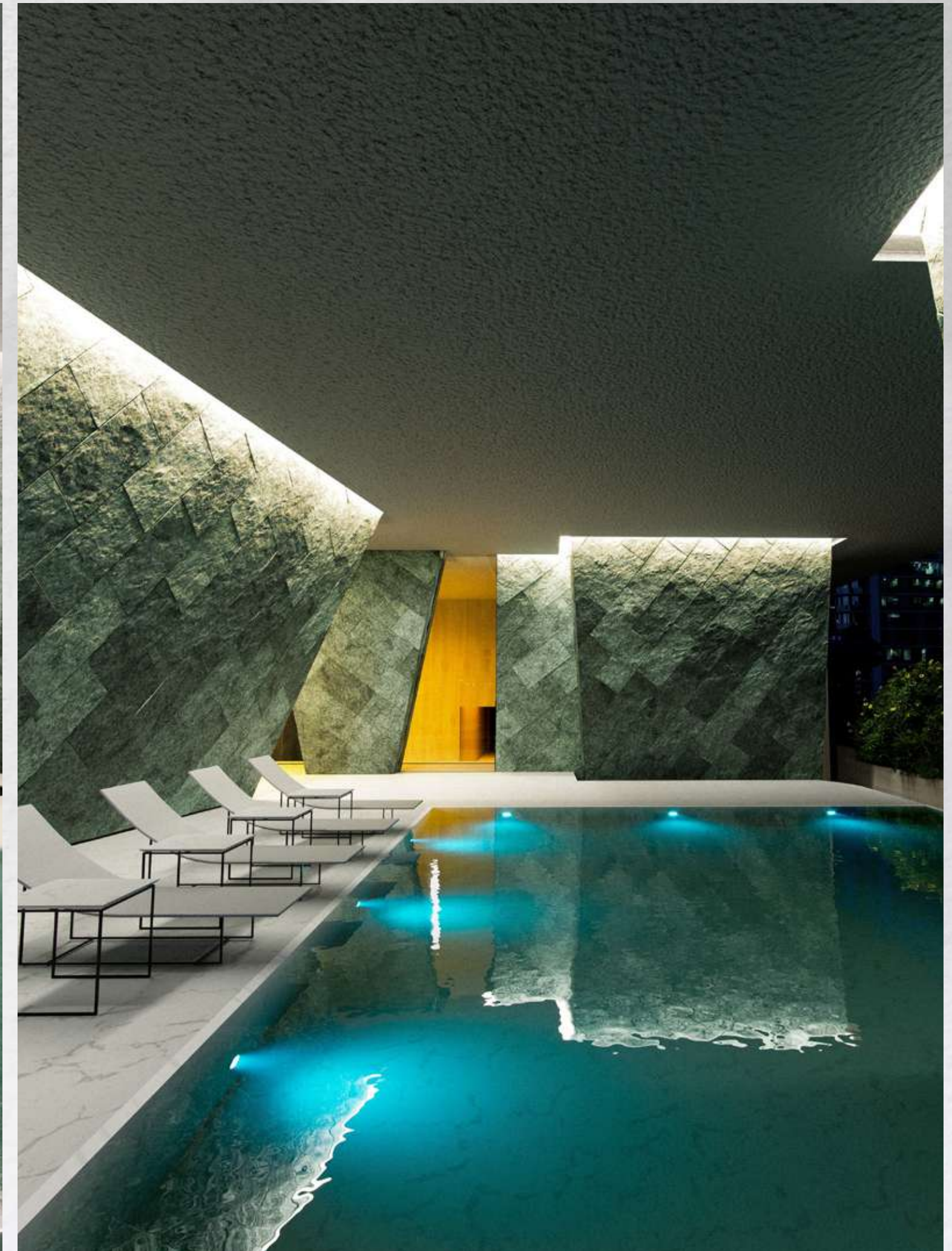
The Cave

Level 17

1. Amenity Arrival Lift Lobby
2. Female Treatment
3. Massage
4. Beauty Reception
5. Outdoor Lounge
6. Wellness Reception
7. Sauna
8. Ice Bath
9. Steam
10. Hararet
11. Amenity Terrace
12. Indoor Pool
13. Outdoor Pool
14. Spa
15. Female Wc
16. Male Wc
17. Reflection Pool
18. Male Treatment



The Cave

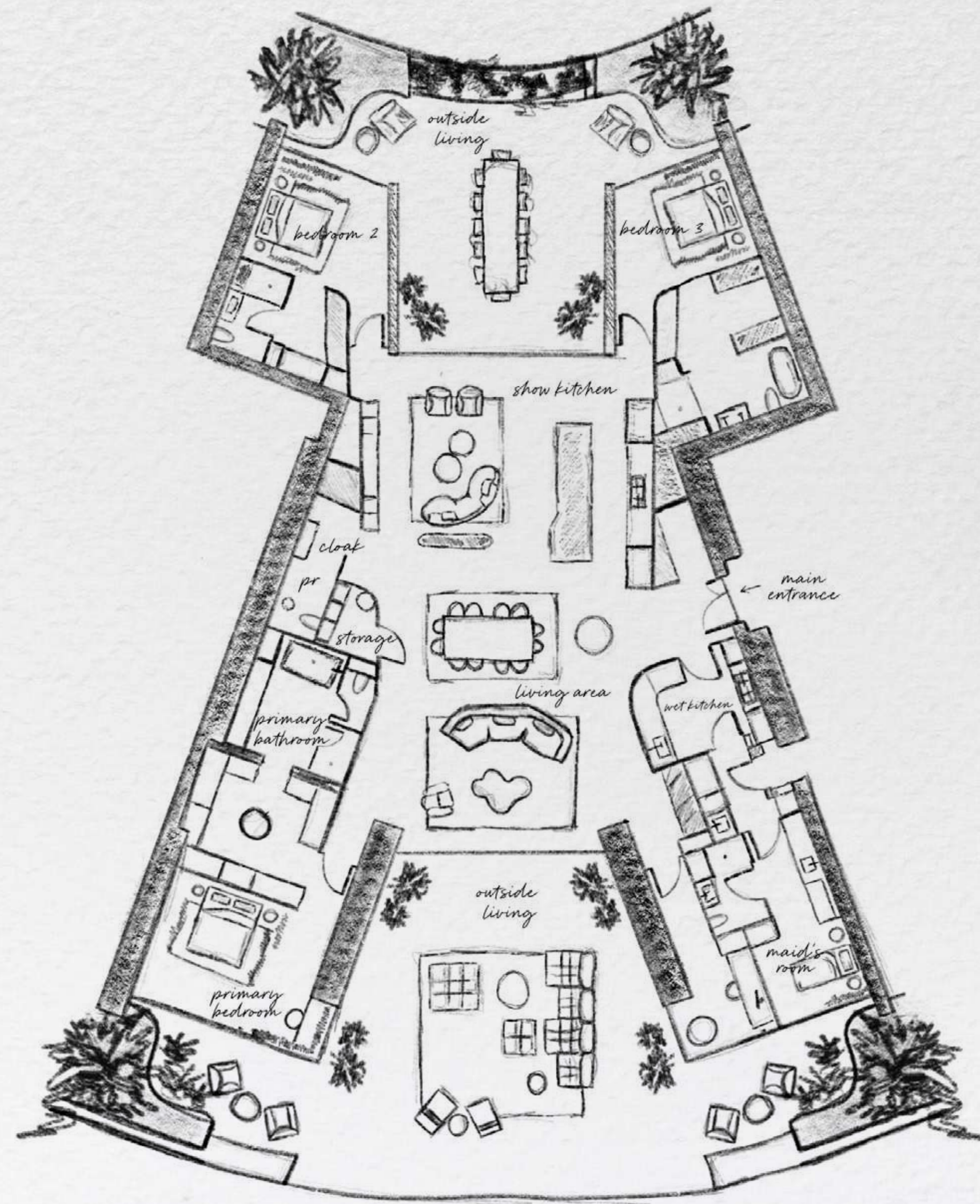


The Retreat

The Retreat

Type 3

3 Bedrooms



The Retreat



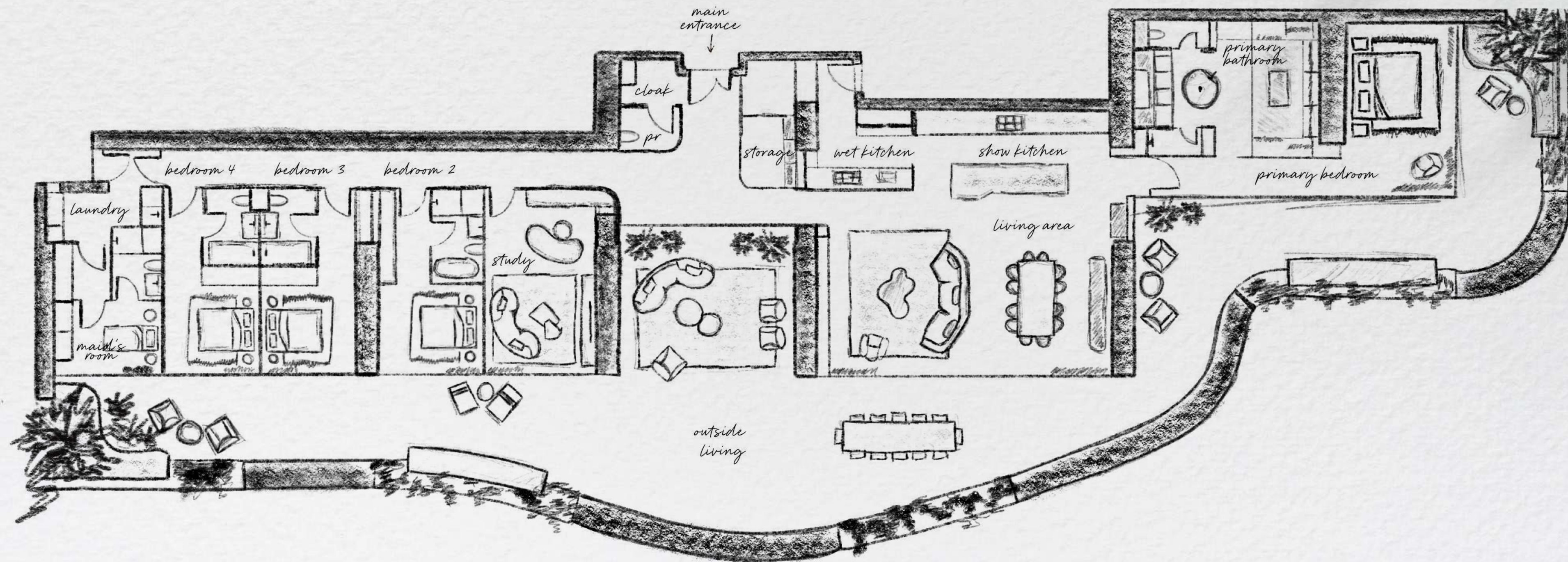
The Retreat



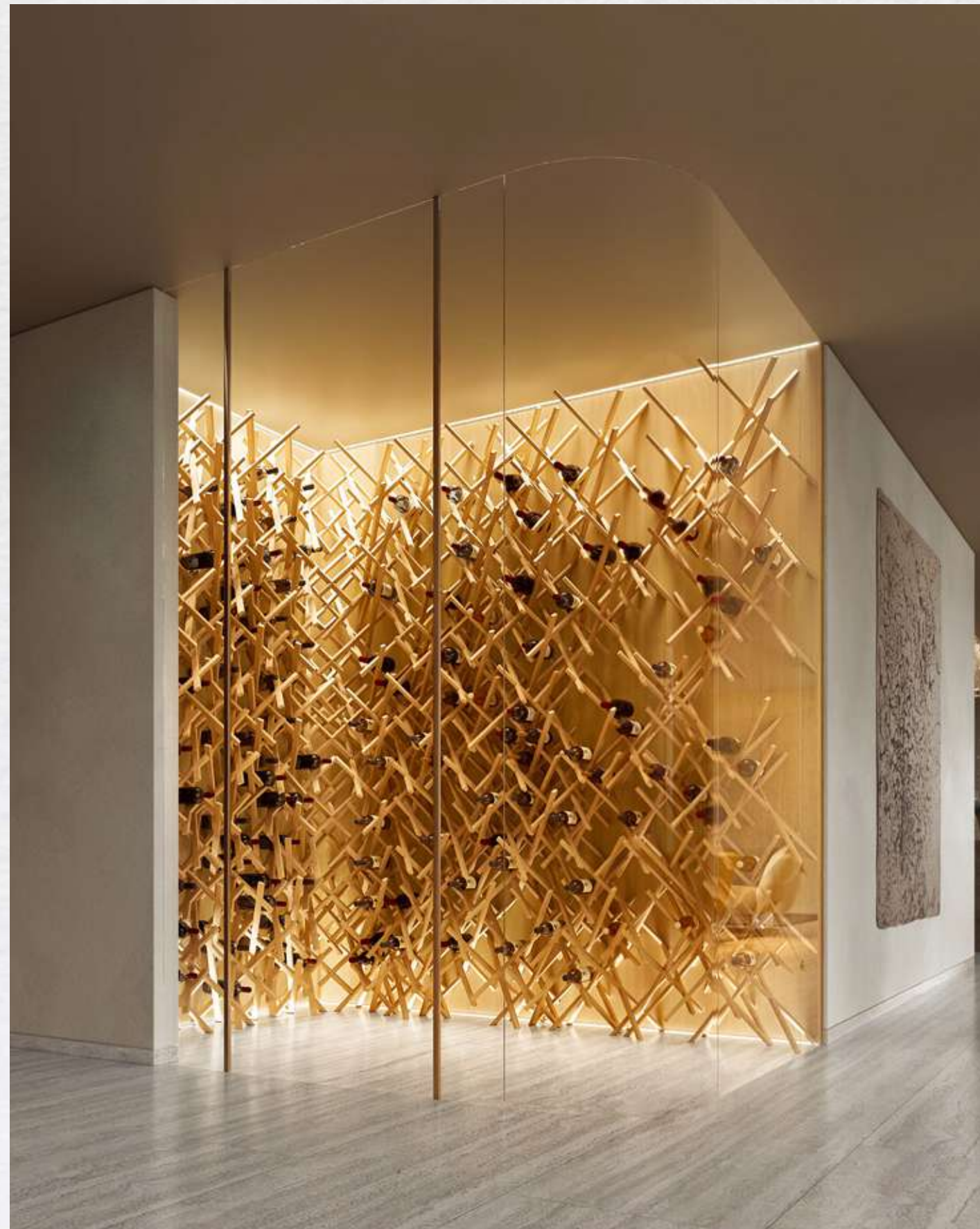
The Retreat

Type 5

4 Bedrooms



The Retreat



The Retreat



The Retreat



The Retreat



The Retreat



The Retreat



The Retreat



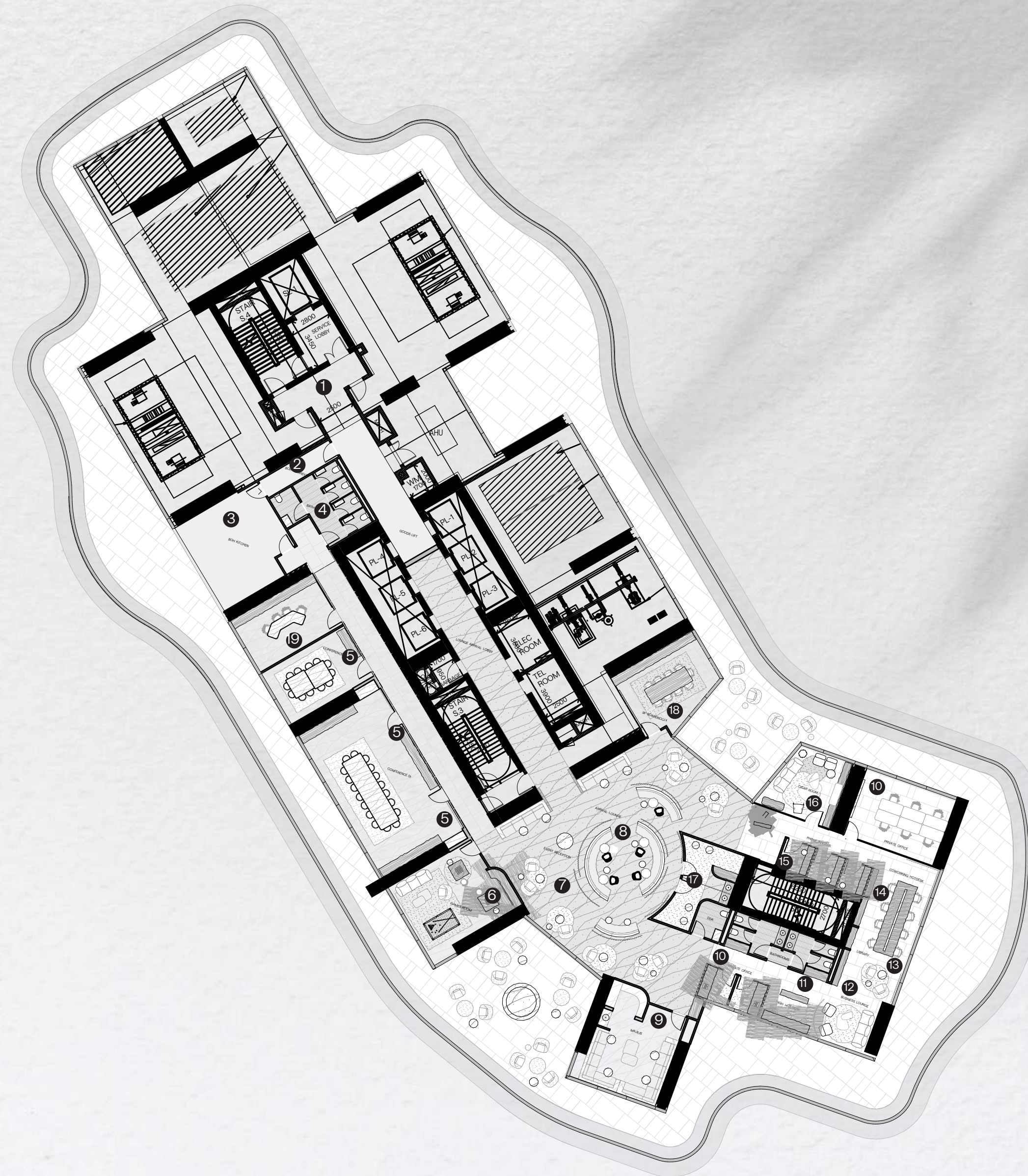
The Retreat



The Mountain

Level 36

1. Bathrooms
2. Conference/Private Dining
3. Majilis
4. Event Reception
5. Arrival Lounge
6. Games Room
7. Private Office
8. Hot Desk
9. Business Lounge
10. Library
11. Co-Working Hot Desk
12. Phone Booth
13. Cigar Room
14. 4p Meeting Room
15. 9p Boardroom
16. Podcast Room



The Mountain



Thank You

